



**UNIVERSITY
PREPARATION
ABROAD**

Students and Adults

2025-2026

Canada / USA
United Kingdom
Germany / France



Guaranteed
university
placement

Live

the

language



Welcome to EF

Since 1965, EF has been opening the world through education, helping people of all ages and nationalities achieve academic success and cultural fluency while exploring the world.

With 60 years of experience, our personalized University Preparation Abroad programs ensure you achieve complete language proficiency while developing the essential skills for your university studies and future international careers. Upon successfully completing your studies, we guarantee your place at one of over 230 partner universities in the UK, Ireland, US, Canada, Australia, Germany, or France. Our experts will provide you with personal assistance and professional advice to guide you on your path to studying abroad.

We look forward to welcoming you at one of our global campuses. We'll support you in achieving academic and personal success and help you discover the perfect university for your goals and dreams.

Jacob Torén

President
EF Language Abroad

Why EF

- 04 Guaranteed academic success starts here
- 05 A world of impact
- 06 Programs for every stage
- 07 Our student success stories
- 08 Step-by-step personal guidance
- 10 Experience the authentic student lifestyle

Programs

- 14 EF University Foundation Program
- 16 United Kingdom & Ireland
- 17 United States & Canada
- 18 Australia
- 19 Germany & France
- 20 Accelerated College Degree Program
- 22 Pre-Master's, Pre-MBA & Pre-PhD Programs
- 26 Language Preparation Program

UK & Ireland

- 28 School system of the UK & Ireland
- 30 Meet our successful alumni
- 32 Choose your university in the UK
- 34 EF Manchester
- 36 EF Oxford
- 38 EF Dublin

USA & Canada

- 40 School system of the USA & Canada
- 42 Meet our successful alumni
- 44 Choose your university in the USA or Canada
- 46 EF New York
- 48 EF Boston
- 50 EF Seattle
- 51 EF Vancouver

Australia

- 52 School system of Australia
- 54 Choose your university in Australia
- 56 EF Sydney

Germany

- 60 School system of Germany
- 61 EF Munich

France

- 62 School system of France
- 63 EF Paris

More Information

- 64 More EF programs for all ages
- 66 General information & how to book

Guaranteed academic success starts here

EF University Preparation Abroad programs are designed to give international students the academic and language skills required for higher education. Whatever path you're on, we'll help you fulfill your potential.

Earn direct entry

EF University Preparation Abroad prepares you for higher education by equipping you with the language and academic skills needed for success. When you graduate from your EF program, you'll be guaranteed entry at one of over 230 partner universities in the UK, Ireland, USA, Canada, Australia, France, or Germany.

Our programs help you to achieve your individual goals and ensure that you meet the language and academic requirements of local university admission systems. We'll prepare you for proficiency exams and equip you with certified proof of your language fluency and academic achievements, which are globally recognized by employers, universities and governments. You will also learn and develop essential life skills, like critical thinking, creativity, cultural awareness, problem-solving and more, for a successful global future.

A proven record of success

Last year, 90% of students were accepted into one of the top 50 universities in the UK. Previous placements include the University of Oxford, University of Cambridge, London School of Economics, and Imperial College London.

In North America, students had a 99% placement rate, with recent acceptances to Purdue University, Virginia Tech, George Washington University, and Arizona State University. Previous placements include Harvard, MIT, NYU, and many more.

The student pass rate in Australia was 98% and previous placements include the University of Sydney.

EF University Preparation Abroad Programs have earned the approval and recognition of prestigious accreditation boards, universities, and educational associations worldwide. EF's International Language Campuses are recognized by renowned educational bodies, including the British Council, Equals, ACCET, and NEAS. Additionally, the Independent Schools Inspectorate accredits our schools in the United Kingdom, while our Dublin school is accredited by ACE.

With you all the way

At EF, you'll receive mentorship and instruction from fully-certified faculty and staff. You'll be guided throughout by an experienced EF University Pathway Advisor, who helps you manage the university application process and gain admission to a respected institution.

Our dedicated approach to university preparation means that all programs can be personalized to your unique language and academic needs. Regardless of your level of fluency, we can help you meet and exceed university entrance language requirements. You'll also benefit from a wide range of specialist academic modules, which are elective courses that focus on academic subjects.

By engaging with diverse perspectives and fostering cross-cultural understanding, you have the opportunity to create a ripple effect of change and make an impact on the world.

Our commitment to student safety and wellbeing

The safety and wellbeing of our students is our number one priority. We have been welcoming students to our global campuses since 1965 and are expertly equipped to support them across their journeys abroad. Our experienced EF Staff are available 24/7 to support students with any matter that may come up during their studies.

Exploring the future of language learning

We are working with researchers from the University of Cambridge to fundamentally improve how students learn. The network addresses a broad range of disciplines, including linguistics, pedagogy, educational technology, language assessment, and cultural immersion. Together, we invest in research to improve the future of language learning, teaching, and cross-cultural understanding.

ef.com/research

EF and Hult International Business School

EF collaborates with Hult to improve the academic opportunities available to students around the globe. Hult recognizes many EF certificates, opening pathways for those who wish to pursue undergraduate, Master's, or MBA programs.



A world of impact

We fundamentally believe that education is the key to sustainable solutions. Join us in our mission of making a difference!

Hello Zero

We're committed to bringing sustainability to the heart of EF, continually working to make tangible and meaningful reductions in our environmental footprint. In 2022, we partnered with myclimate, a leading organization in carbon accounting and voluntary climate protection, to find effective strategies to reduce emissions across our operations. We are also investing in reforestation efforts that protect vulnerable ecosystems and support local communities.

Green initiatives in our campuses and offices

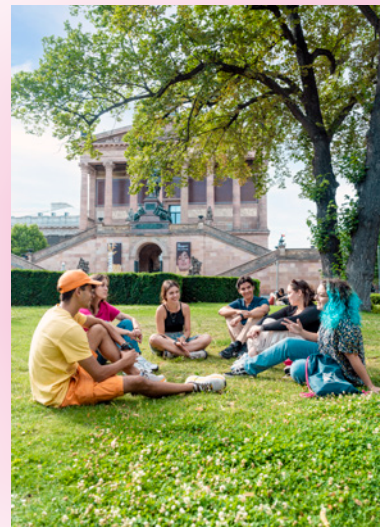
EF campuses and offices are vital parts of our commitment, as well as collaborating with suppliers aligned with our goals. Our dedicated EF Green Teams coordinate global activities engaging staff and students in environmental stewardship, from clean-ups in urban areas, parks, beaches, and rivers to community-driven projects. As part of our ongoing efforts, we prioritize initiatives like the distribution of reusable water bottles to minimize single-use plastic. We also promote education about sustainability. To this end, we've introduced a new Special Interest Class (SPIN) focused on Sustainability & Social Impact.

Supporting humanitarian relief

We've partnered with Médecins Sans Frontières (Doctors Without Borders) with the goal of providing support in both fortifying long-term medical relief efforts and amplifying the impact of emergency first-response during crises. Through our collaboration we aim to direct aid where it is needed most, supporting medical education and delivering rapid relief in critical areas around the globe. Our partnership contributes to funding training for frontline healthcare workers through the MSF Academy for Healthcare, as well as enabling immediate medical response through the MSF Emergency Fund.



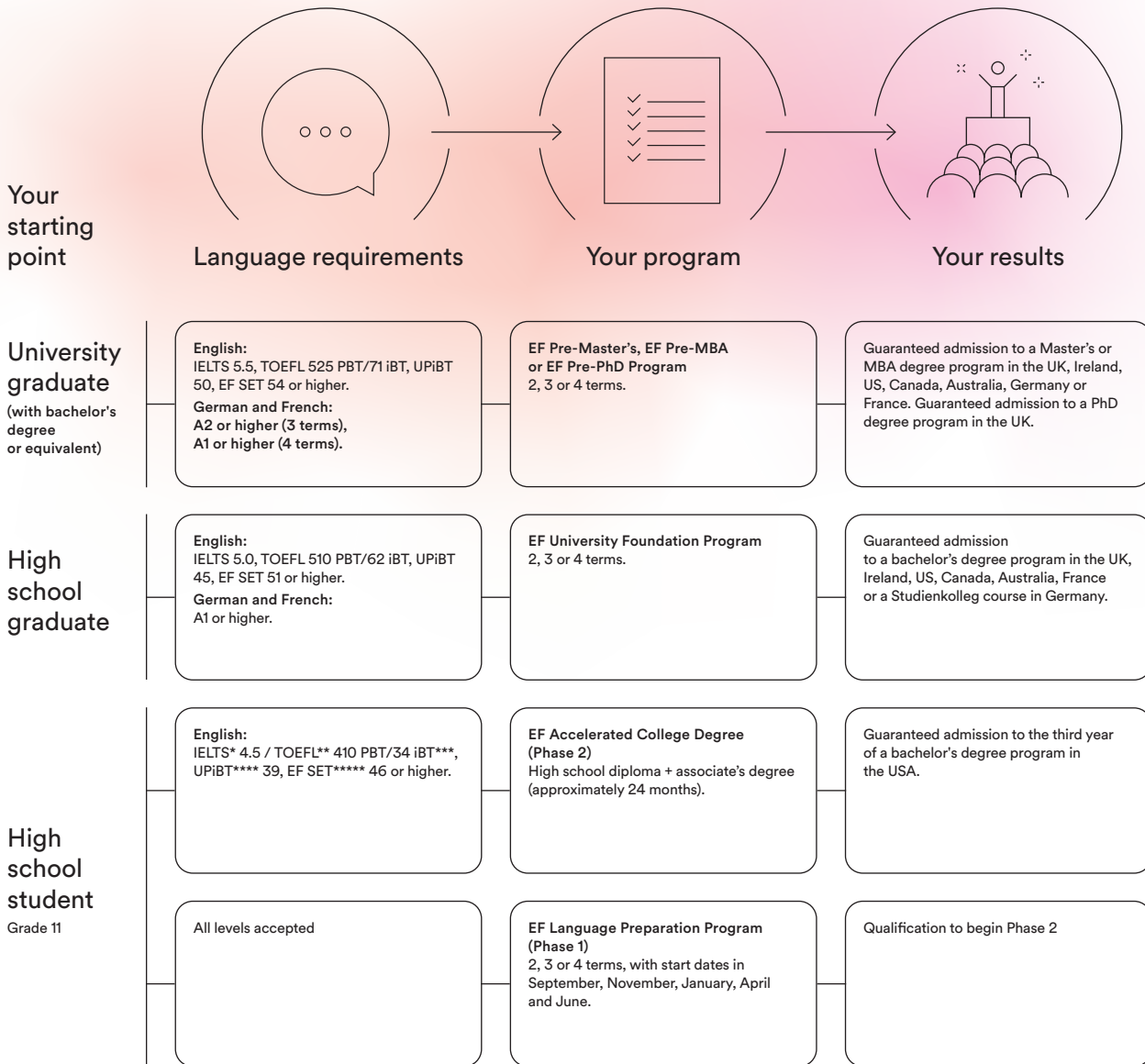
We've planted 9 million trees in Kenya, Madagascar, Mozambique with our first partner, Eden Reforestation Projects. Since 2024 we've partnered with WeForest to grow 3 million trees and regenerate 1,500 hectares of land while supporting local communities and wildlife conservation efforts in Tanzania.



Get informed
and get involved
ef.com/impact



Programs for every stage



Program duration overview

- 1 term = 1 Academic Trimester
- 2 terms = 1 Academic Semester
- 3 terms = 1 Academic Year
- 4 terms = 1 Academic Year (extended)

All language requirements shown indicate minimum score needed. You can also apply if you possess the equivalent TOEFL score or similar. See individual program pages for details.

* IELTS (International English Language Testing System)

** TOEFL (Test of English as a Foreign Language)

*** iBT (Internet Based Test)

**** UPIBT (University Pathway Internet Based Test)

***** EF SET (EF Standard English Test)

Not finished high school?

Unique to EF Australia, year 10 high school students can take an EF University Foundation Program, then enroll with our partner, TAFE, on a program that provides a clear route to university.

Do you have time limitations?

EF Language Preparation Programs can be taken from 2 weeks to a full academic year.

Our student success stories

EF University Preparation Abroad guarantees you placement at one of over 230 partner universities, with EF graduates having previously been accepted at the University of St Andrews, Oxford, and Harvard.

University	Student	Region
Harvard Business School (US)	Madina Syapatayeva	Kazakhstan
Oxford University (UK)	Markus Teichmann	Germany
University of St Andrews (UK)	Simona Mezzina	Italy
University of Durham (UK)	Kiami Vemba	Angola
University of Glasgow (UK)	Fitra Hira Azzahara	Indonesia
University of Warwick (UK)	Federico Masiero	Italy
University of Leeds (UK)	Tsz Ying Yeung	Hong Kong SAR
King's College London (UK)	Finn Corentin Lennert Feddersen	Germany
University of Birmingham (UK)	Imane Basset	Algeria
George Washington University (US)	Nathan Garcia	France
Arizona State University (US)	Timéo Plantecoste	France
Iowa State University (US)	Lwena Ingles	Angola
University of Arizona (US)	Diego Di Vanni	Belgium
University of San Francisco (US)	Akari Yoshimura	Japan
Parsons (The New School) (US)	Kimberly Alejandra Ortega Sanchez	Ecuador
Freie Universität Berlin (DE)	Yee Him Wong	Hong Kong SAR
Technical University of Munich (DE)	Tsz Chun Yeung	Hong Kong SAR
Ludwig-Maximilian-Universität (DE)	Colin Wing Cheng	Hong Kong SAR
Universität Hamburg (DE)	Kei Yin Ngan	Hong Kong SAR
Technische Universität Braunschweig (DE)	Yuet Lam	Hong Kong SAR
Karlsruhe Institute of Technology (DE)	Ling Hin Tsang	Hong Kong SAR
University of Stuttgart (DE)	Nicholas Pemberton	USA
Universität Heidelberg (DE)	Hang Yee Lee	Hong Kong SAR
Université Paris Sorbonne (FR)	Li Huai Li	Taiwan
Université Paris Cité (FR)	Ruku Hotta	Japan
The American Business School Paris (FR)	Dylan Galarraga	Ecuador
Université de St Etienne (FR)	Mateo Sebastian Leon	Ecuador
University of Technology Sydney (AU)	Henry Law	Hong Kong SAR
Monash College (AU)	Yoyo Cheung	Hong Kong SAR
International College of Management (AU)	Zarina Skripchenko	Kazakhstan

Step-by-step personal guidance

Our experienced faculty and EF University Pathway Advisors are experts at navigating the university application process. With their guidance and mentorship, you'll be placed on a university program that matches your personal goals and career ambitions.

1) Personalized study plan

Receive a free consultation from an EF Academic Counselor when you contact your local EF office. You'll learn about the educational requirements of your dream country of study and outline a specialized program to match your goals. You'll also benefit from informational seminars and free language testing to help determine your language proficiency.

2) Prepare for university

Our EF Academic Counselors are experts in navigating the paperwork required for university entry. Along with specialist advice, they can provide full visa support in the US, Canada, UK, Ireland, Australia, and elsewhere. In the UK for example, our educational credentials mean we're licensed by the UK Home Office to enroll international students under Student Visa Route. We're also equipped to help you with travel and insurance arrangements.

3) Apply for top universities

Throughout your program, an on-site EF University Pathway Advisor will mentor you on the university application process. They'll work with you one-on-one to match your academic goals and career ambitions with the right universities, before giving you expert advice on your personal statement, recommendation letters, and exam scores.

Meet the team behind your journey



Cassandra Catucci

Program Director
USA and Canada

Cassandra has first-hand knowledge of what it takes to successfully apply to universities in North America. She collaborates with our University Pathways Advisors, guiding hundreds of students to apply and gain admissions to prestigious schools like NYU, BU, Virginia Tech, and more. Cassandra holds a BA in Sociology, an MS Ed in TESOL, and studied in Italy during her undergraduate studies.



Soumya Krishnamurthy

Program Director

United Kingdom

Soumya has been working with EF and the University Preparation Programs for many years. She's helped place international students from across the globe at some of the UK's top universities, including the University of Edinburgh, the University of Manchester, and the University of Surrey. She has an MSc in International Business Negotiation and a Bachelor of Engineering in Electronics and Communication.

Mike Masca

University Preparation Coordinator

Australia

As University Preparation Coordinator, Mike ensures that students are ready to face the demands of a university degree in Australia and guides them through the application process. He also teaches and assesses the students enrolled in the program. He has a BA in English Language Teaching and a Masters in TESOL from UTS (AU). Mike has taught English for Academic Purposes, IELTS, and Cambridge Exam Courses in Sydney for over 13 years.



Mickaël Pointecouteau

Directeur pédagogique

France

Mickaël began his career as a language teacher before working internationally in Mexico, England, and Japan as a course manager for the Alliance Française and the Institut Français network. At EF Paris he is committed to offering exceptional preparation and guidance for UPA students aspiring to attend public or private universities in France.



Boris Lezaja

Manager Universitätsvorbereitung

Germany

Boris has a double Master's degree in German studies and Philosophy and is currently working on his doctoral thesis. He has worked as a teacher at several language institutes, including the Goethe Institute. Boris helps our students to master the German language at the level they need to pass their German exam, apply to universities in German-speaking countries, and to get their desired degree.

Experience the authentic student lifestyle

Our campuses offer high-level academic resources, cozy accommodations, and a variety of cultural events and immersive activities to enjoy with new friends.

Student life

Studying at an EF University Foundation Program campus enables you to be part of an exciting international student body. Learning alongside students from around the world means daily lessons are always enhanced with lively discussions from a global perspective. The study skills you gain in your classes will help you understand how to successfully manage university exams and assessments.

Experience university life

During your program you'll visit a range of universities, where you'll see the facilities and sample lectures. At our EF campus, we also welcome professors from partner universities to deliver exciting lectures and workshops, in order for you to sample university academic standards.

Join the EF community

Each week, an on-site EF Activities Manager arranges a full schedule of group sports, activities and excursions to help immerse you in an authentic campus lifestyle.

Download the EF Campus Connect app from App Store and Google Play, it will be your go-to resource for everything you need to make the most of your EF experience.

Action-packed schedule

Your EF Activities Manager will plan trips to museums, historical sights and nightlife. On the weekends, you'll explore your host country farther afield on excursions to iconic cities or stunning natural sights.

Contact one of our expert EF Study Advisors to learn more: eflanguages@ef.com





“I love that I can practice my language skills by engaging with people in class, on campus, and in the residence. The variety of backgrounds, cultures, and accents here is truly amazing.”

Sofia Mancini from Italy, EF Manchester

Accommodation

EF Homestay (included)

Experience maximum cultural exchange by living with native speakers in a private home. Gain insight into local culture, pick up expressions with greater ease and return home with a more authentic accent.

- Shared room (singles available for a supplement)
- Breakfast and dinner (Monday-Friday) and all meals on weekends

EF Campus Living and Residence (optional)

You may also choose to enhance your experience abroad by living with students from all over the world at an EF Campus or Residence. Student residences offer you a social environment that allows you to practice your new language skills with classmates.

- Shared/single room in a student residence
- Meals in the student cafeteria or self-catered

Choose
a program,
achieve your
dreams





University Foundation Program

Gain the skills you need to progress directly to an undergraduate program in the United Kingdom, Ireland, United States, Canada, Australia, Germany, or France.

Program overview

EF University Foundation Program (UFP) is a 2-, 3- or 4-term program of study that helps international students fulfill language and academic requirements for university entrance abroad. Intended for high school graduates, this program bridges the gap between a student's previous education and what is expected of them at a university abroad.

This preparation year of secondary school studies is mandatory for students seeking higher education in the United Kingdom and highly recommended for students who wish to study in Ireland, the United States, Canada, Australia, France, or Germany. In Germany, the EF University Foundation Program focuses on preparing high school graduates for university entrance exams.

Gain the skills to succeed

Our EF University Foundation Program prepares you thoroughly for the challenges of higher education. You'll learn essential study skills such as essay writing, critical thinking and independent research, as well as academic terminology.

Depending on your choice of country and subject, EF offers a range of academic specialisms which enables you to access almost any bachelor's degree program.

Perfect your language skills

EF University Foundation Program will give you the training you need to meet university enrollment requirements. To qualify for most bachelor's degree programs in English-speaking countries, students generally need an IELTS score of at least 6.0 or a TOEFL of 550 PBT/ 213 CBT/ 81 IBT or above.

For students whose language abilities are not yet strong enough, an additional program of study, the EF Language Preparation Program, may be necessary to help establish a strong foundation of fluency to meet the enrollment requirements of any EF University Preparation Abroad program.

Guaranteed admission

With our placement guarantee, you secure a spot at one of over 230 partner universities in the UK, Ireland, US, Canada, Australia, Germany, or France upon completing your studies. You will have dedicated University Application Workshops with trained teachers designed to navigate the process of choosing and applying to a degree program. Furthermore, your University Pathways Advisors will be on hand to give you one-to-one assistance and advice, organize visits to universities, and ensure you meet critical deadlines to maximize your chances of acceptance to the best possible university.



The Capstone Project*

Students enrolled on a 3-term University Foundation Program, a Pre-Master's or a Pre-MBA will complete the Capstone Project during their third term. Designed to prepare you for the type of work required at university, you'll conduct intensive research on a topic, write a formal paper with citations and formatting and conduct a media presentation of your findings in front of a panel of teachers.

*Only available in North America

University credits

The University Foundation Program provides students with essential academic skills and the opportunity to earn credits toward their degree. Completing the program builds a strong educational foundation, aids in a smoother transition to degree-level studies, and may shorten the duration of their university education. This integrated approach ensures students are well-prepared for their chosen academic pathway.

Turn over to
discover our
destinations

Pathway to university

High
school
graduate

English: IELTS 5.0 or higher
German: A1 or higher
French: A1 or higher

Don't meet our requirements?
Take an EF Language Preparation
Program. Available from 2 weeks to
a full academic year.

EF University Foundation Program
(UFP), available in: Manchester,
Oxford, Dublin, Boston, New York,
Vancouver, Sydney, Munich
and Paris
2, 3 or 4 terms

Guaranteed admission to a
bachelor's degree program
in the UK, Ireland, US,
Canada, Australia, France,
or a Studienkolleg course
in Germany upon successful
completion of the course.

United Kingdom & Ireland

Surround yourself with academic excellence by living and learning in picturesque university cities in the UK or Ireland.

United Kingdom

32 lessons
of 40 mins per week
(21 hours, 20 minutes)

In the United Kingdom, all international students who have studied for less than 13 years are required to take an additional year of study, known as an EF University Foundation Program, before commencing higher education studies. If you have completed 13 years of school, and are from the European Union, you are eligible for a 2-term fast-track course.

Program duration

3 terms, with start dates in September, January and April. A 4-term option is offered only at EF Oxford, starting in September.

Locations

EF Manchester, EF Oxford

English requirement

IELTS 5.0, TOEFL 510 PBT/180 CBT/ 64 IBT, EF SET B2.1 minimum or the equivalent on the free EF UPIBT test.

Result

Program graduates are guaranteed entry to one of our partner institutions in the United Kingdom.

Pathways

Before you travel, you'll choose one of five Academic Pathways. These specifically designed courses are crafted to build your knowledge in the subject you intend on studying at university.

Choose from the following specialist subjects:

- Business, Finance & Management
- Science, Engineering & Technology
- Social Sciences & Law
- Computer Science
- Art and Architecture Curriculum

During your Academic Pathway, you'll study a set curriculum:

Term one

- Advanced Language Skills
- English for Academic Purposes
- Language in Society or Maths Fundamentals
- University Application Workshop
- One Specialist subject

Term two

- Intensive IELTS Preparation
- Quantitative and Qualitative Research Methods
- One specialist subject

Term three

- Critical Thinking
- Two specialist subjects



Ireland

32 lessons
of 40 mins per week
(21 hours, 20 minutes)

In Ireland, prestigious universities will accept our students who have completed our EF University Foundation Program and meet the necessary academic and language qualifications.

Program duration

2 or 3 terms, with start dates in September and January.

Location

EF Dublin

English requirement

IELTS 5.0, TOEFL 510 PBT/180 CBT/ 64 IBT, EF SET B2.1 minimum or the equivalent on the free EF UPIBT test.

Result

Program graduates are guaranteed entry to one of our partner institutions in Ireland.

Pathways

Before you travel, you'll choose one of three Academic Pathways. These specifically designed courses are crafted to build your knowledge in the subject you intend on studying at university. Choose from:

- Business, Finance & Management
- Science, Engineering & Technology
- Social Sciences & Law



United States & Canada

Choose to study in one of North America's most iconic cities and gain the knowledge to enroll at a leading university.

United States & Canada

32 lessons
of 40 mins per week
(21 hours, 20 minutes)

The EF University Foundation Program in the United States and Canada provides a combination of intensive English, TOEFL and university preparation lessons, academic research, study skills and essay composition. In addition, students can choose from electives in a variety of subject areas.

Program duration
2, 3 or 4 terms, with start dates in September, January, April and June.

Locations
EF Boston, EF New York, EF Vancouver

English requirement

- 4 terms: IELTS 4.5, TOEFL 410 PBT/ 103 CBT/ 34 IBT, EF SET 46, and UPiBT 39
- 3 terms: IELTS 5.0, TOEFL 450 PBT/ 133 CBT/ 45 IBT, EF SET 51, and UPiBT 45
- 2 terms: IELTS 5.5, TOEFL 525 PBT/ 194 CBT/ 71 IBT, EF SET 54, and UPiBT 50

Result
Successful program graduates are guaranteed entry to one of our partner institutions in North America.

Curriculum

Term one

- ACT Preparation/Academic Vocab (Canada)
- TOEFL Skills
- University Application Workshop
- Writing Fundamentals
- Grammar & Pronunciation

Term two

- Advanced TOEFL Preparation
- University Application Workshop
- Academic Writing & Grammar
- Advanced Reading Skills
- Sociology - Diversity, Equity and Inclusion
- One elective

Term three

- Advanced Research & Writing
- Communicative Presentations
- Advanced College Lecture series
- Critical Reading & Analysis
- Capstone project
- Three electives

Electives
(availability may vary depending on intake and destination)

- Economics
- Science & Technology
- International Law
- Advertising
- Journalism
- Cross-cultural Business Communication
- Business Basics
- Negotiation Skills
- Globalization
- Creative Writing
- Travel & Tourism
- ACT preparation
- Drama
- Academic Vocabulary



Australia

Refine your English on Australia's sunny shores and equip yourself with the skills you need to gain entrance to a top university.

Australia

32 lessons
of 40 mins per week
(21 hours, 20 minutes)

The EF University Foundation Program program in Sydney prepares students for undergraduate studies in Australia. Learning is based on intensive tuition in small groups, combined with study techniques including presentation skills, critical thinking and research.

Program duration
2, 3 or 4 terms, with start dates in September, January and April.

Location
EF Sydney

English requirement

- 4 terms: IELTS 4.5, TOEFL 410 PBT/ 103 CBT/ 34 IBT, EF SET B1.2 minimum or the equivalent on the free EF UPiBT test
- 3 terms: IELTS 5.0, EF SET B2.1 minimum or the equivalent on the free EF UPiBT test
- 2 terms: IELTS 5.5, EF SET B2.2 minimum or equivalent on the free EF UPiBT test

Result
Program graduates are guaranteed entry into the first year of an undergraduate degree in Australia. Students must have completed an Australian Year 12 equivalent and their grades must meet the university entry requirements for their major.

Curriculum*

Term one: Language

- Academic Grammar & Vocabulary
- Essay Writing
- Oral presentations
- Lecture Note-Taking
- Specialist subjects, depending on intake

Term two: Skills

- IELTS Preparation
- Critical Thinking & Study Skills
- Oral Presentations
- Lecture Note-Taking
- Specialist subjects, depending on intake

Term three: Research

- Independent Research and Writing Practice
- Critical Thinking Practice
- Essay Writing
- Oral Presentations
- Lecture Note-Taking
- Specialist subjects, depending on intake

*Order of terms is subject to change

Specialist subjects

- Academic Writing
- Exam Preparation
- Finance & Economics
- Legal & Corporate English
- Sales
- Business
- Communication
- Marketing
- Economics
- Professional Skills

*Some of these classes may operate in the form of SPINS (Special Interest Classes) and are subject to change depending on class size and student requirements.



Germany & France

Live and learn in Munich or Paris and benefit from a first-class education in a renowned university city.

Germany

32 lessons
of 40 mins per week
(21 hours, 20 minutes)

The EF University Foundation Program in Germany combines intensive German language instruction with exam preparation and a range of courses designed to prepare students for universities in German-speaking countries.

Program duration
2, 3 or 4 terms, with start dates in September, January and April.

Location
EF Munich

German requirement
- 2 terms: B1 or higher
- 3 terms: A2 or higher
- 4 terms: A1 or higher

Result
Program graduates are guaranteed entry to a Studienkolleg admission exam course in Germany.

Curriculum

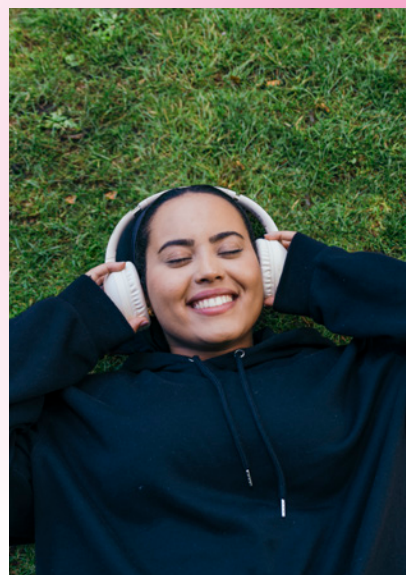
Term one
- Language Development
- German for Academic Purposes

Term two
- Language Development
- Academic Writing
- Lecture Skills

Term three
- Exam Preparation
- Presentation Skills

Term four
- Advanced Exam Preparation
- Academic Writing
- Communicative Presentations
- Advanced College Lectures
- Critical Reading & Analysis
- Three specialist modules

Specialist modules
- Grammar
- Vocabulary
- Media
- German Studies
- Business Studies
- Technical German



France

32 lessons
of 40 mins per week
(21 hours, 20 minutes)

EF's University Foundation Program trains you in the skills needed to enroll at a French university. To qualify for most undergraduate degree programs, you need a DELF B2 or a higher qualification.

Program duration
2 or 3 terms with start dates in September and January. 4-terms available in September only.

Location
EF Paris

French requirement
- 2 terms: B1 or higher
- 3 terms: A2 or higher
- 4 terms: A1 or higher

Result
Program graduates are guaranteed entry to one of our partner institutions in France.

Curriculum

Term one
- Language Development
- French for Academic Purposes

Term two
- Language Development
- Academic Writing
- Lecture Skills

Term three
- Exam Preparation
- Presentation Skills

Term four
- Advanced Exam Preparation
- Academic Writing
- Communicative Presentations
- Advanced College Lectures
- Critical Reading & Analysis
- Three specialist modules

Specialist modules
- Grammar
- Vocabulary
- Media
- French Studies
- Business Studies
- Technical French



Accelerated College Degree Program

Earn a US high school diploma and an associate's degree through an intensive program of language and academic study that starts at EF Seattle.

Program overview

The EF Accelerated College Degree Program provides students who have not yet graduated from high school with the opportunity to earn a high school diploma and an associate's degree in the United States.

The program is divided into two phases: The first phase of study takes place at EF Seattle where you'll strengthen and reinforce your English fluency and academic writing skills. Phase two involves two years of academic study where you'll earn your high school diploma and associate's degree at a partner university.

You'll graduate at least one year earlier than your classmates back home – saving you time and money. After completion of your associate's degree, you may choose to continue your university education by transferring your university credits towards the completion of a full bachelor's degree.

Living on a US campus

While enrolled in the second phase of the EF Accelerated College Degree Program, you'll be living and learning alongside American students as you gain further English fluency and earn your associate's degree. You'll choose between studying on the campuses of Green River College, Seattle Central College, Pierce College, or Bellevue College, all of which are located in Washington State. You'll work closely with your University Pathways Advisor to determine your academic discipline and how best to apply your academic credentials.

Guaranteed placement

The program guarantees you successful entry to a college degree program through our trusted partnerships with accredited institutions of higher learning where you'll graduate with the academic qualifications you need to succeed.

Program details

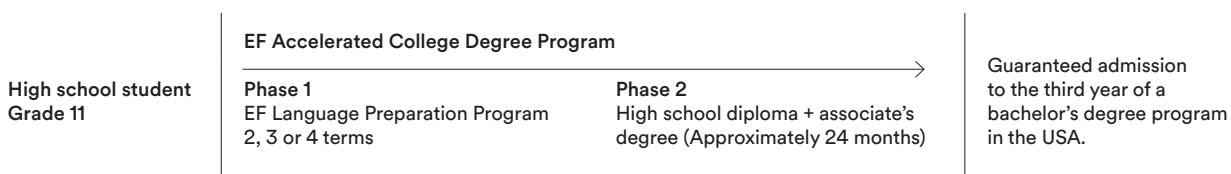
32 lessons
of 40 minutes per week.
Phase two at a partner university.

Program duration
2, 3 or 4 terms (first phase) followed by two years of study at one of EF's three partner colleges.

Locations
Phase one: EF Seattle
Phase two: One of our partner colleges – choose from Green River College, Seattle Central College, Bellevue College and Pierce College in the US.

English requirement
- 4-term program: IELTS 4.0, TOEFL 343 PBT/19 iBT, UPIBT 33 or EF SET 41
- 3-term program: IELTS 4.5, TOEFL 410 PBT/34 iBT, UPIBT 39, or EF SET 46
- 2-term program: IELTS 5.0, TOEFL 510/62 iBT, UPIBT 45 or EF SET 51

Pathway to an American university degree





"EF has prepared me well for university. I really liked the campus, I've experienced a new culture and it's opened my horizons."

Ching Hei Lam from Hong Kong, EF Seattle



Pre-Master's, Pre-MBA & Pre-PhD Programs

Secure guaranteed university placement on a top-ranked Master's, MBA, or Pre-PhD program following an intensive preparation program that develops essential academic knowledge.

Program overview

EF's postgraduate programs prepare students for entrance to a Master's degree, Master of Business Administration degree or PhD program at an international university. These 2-, 3- or 4-term intensive programs provide you with all the linguistic and academic skills necessary for postgraduate study.

Progress to your choice of university

We can provide successful program graduates with guaranteed acceptance to one of our partner universities offering Master's, MBA or PhD programs. Not only do we guarantee placement at an EF partner university, but we can also assist you with your application to virtually any Master's, MBA or PhD program in your country of study.

Our Pre-Master's & Pre-MBA and PhD alumni have been accepted to the University of Oxford, the University of Cambridge, Harvard University, Massachusetts Institute of Technology and the Wharton School at the University of Pennsylvania, just to name a few.

Enhance your qualifications

EF's postgraduate programs prepare students for entrance to a Master's degree, Master of Business Administration degree or PhD program at an international university. These 2-, 3- or 4-term intensive programs provide you with all the linguistic and academic skills necessary for postgraduate study.

For students wishing to pursue a PhD, you must have completed a Master's degree and be ready to begin work on your thesis proposal.

A tailored program

EF's postgraduate programs are tailored for students who are bound for graduate tuition, and offer the flexibility of studying for either 2, 3 or 4 terms. In the UK you'll take Electives in an academic area of your choice, to help prepare you for your postgraduate degree and build your overall confidence. In your third term in the USA, you'll also complete the Capstone Project (see p.15 for further details.)

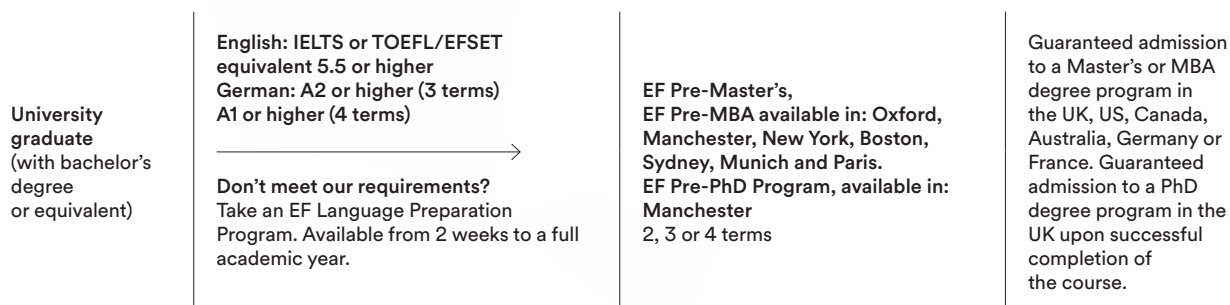
Across our program destinations in the UK, USA, Australia, Germany and France, we will ensure that you reach the required academic and language standards in order to succeed.

Turn over for more program details

English and exam training

One of the goals of EF's postgraduate preparation programs is to help you perfect your specialized academic skills. All university postgraduate programs require an official language proficiency score for international student admissions. Therefore, our programs include highly structured exam training for IELTS, TOEFL and GRE/GMAT exams, as well as a wide range of elective classes in multiple academic areas. You'll receive the best possible preparation for your future studies and gain the confidence and knowledge to succeed in a competitive academic environment. Some of our Australian and US partner universities even allow entry without TOEFL or IELTS scores after successful completion of EF's Pre-Master's or Pre-MBA Program.

Pathway to a postgraduate degree





Pre-Master's, Pre-MBA & Pre-PhD Programs Overview

Pre-Master's & Pre-MBA Program

32 lessons / 30 lessons
of 40 minutes per week
(21 hours, 20 minutes)

The EF Pre-Master's & Pre-MBA Program consists of three main areas: language study, academic skills and specialist modules. Specialist modules are academic classes which enable students to gain confidence studying their chosen subject.

Program duration
2, 3 or 4 terms*, with start dates in September, January, April and June.

*3- or 4-term programs are only available in non-UK destinations.

Locations
EF Oxford, EF Manchester, EF New York, EF Boston, EF Sydney, EF Munich and EF Paris

English requirement

- 4-term program: IELTS 5.0, TOEFL 410 PBT/ 180 CBT/ 62 IBT, EFSET 51 / UPIBT 45.
- 3-term program: IELTS 5.5, TOEFL 525 PBT/ 194 CBT/ 71 IBT, EFSET 54 / UPIBT 50.
- 2-term program: IELTS 5.5 (no component less than 5.0), TOEFL 550 PBT/ 213 CBT/ 81 IBT, EFSET 57 / UPIBT 55. For the UK, a SELT (Secure English Language Test) is required in order to obtain a visa.

German / French requirement
B1 or higher for 2 terms
A2 or higher for 3 terms
A1 or higher for 4 terms

Result
Guaranteed entry into the first year of a postgraduate degree in the UK, US, Canada, Australia, Germany or France.

UK academic outline

- Term one**
- Advanced Language Skills
 - English for Academic Purposes
 - Personal and Professional Development
 - Application Workshop
 - Academic Vocabulary Usage
 - Critical Reading and Writing
 - Research and Library Skills
- Term two**
- IELTS Preparation
 - Quantitative & Qualitative Research Methods
 - Critical Reasoning: identifying, analysing and solving problems systematically

USA academic outline

- Term one**
- GRE Preparation/ GMAT Preparation
 - TOEFL Preparation
 - Application Workshop
 - Writing Fundamentals
 - English Grammar
- Term two**
- Sociology - Diversity, Equity and Inclusion
 - Advanced TOEFL Preparation
 - Academic Writing & Grammar
 - Application Workshop
 - Advanced Reading
 - One elective (for Pre-MBA, business-focused)

- Term three**
- Advanced College Lecture Series
 - Research Writing
 - Critical Reading & Analysis
 - Communicative Presentations
 - Capstone project
 - Three electives

- Electives**
(availability may vary depending on intake and destination)
- Advanced Grammar & Pronunciation
 - Advanced Vocabulary
 - Business Writing
 - Creative Writing
 - US History
 - Canadian History
 - TED Talks
 - Current Events
 - Drama

Australia academic outline*

- Term one: Language**
- Academic Grammar & Vocabulary
 - Essay Writing
 - Oral presentations
 - Lecture Note-Taking
 - Specialist subjects, depending on intake
- Term two: Skills**
- IELTS Preparation
 - Critical Thinking & Study Skills
 - Oral Presentations
 - Lecture Note-Taking
 - Specialist subjects, depending on intake

- Term three: Research**
- Independent Research & Writing Practice
 - Critical Thinking Practice
 - Essay Writing
 - Oral Presentations
 - Lecture Note-Taking
 - Specialist subjects, depending on intake

*Order of terms is subject to change

- Specialist subjects**
- Academic Writing
 - Exam Preparation
 - Finance & Economics
 - Legal & Corporate English
 - Sales
 - Business
 - Communication
 - Marketing
 - Economics
 - Professional Skills

These classes are subject to change depending on class size and student requirements.

Germany academic outline

Term one

- Language Development
- German for Academic Purposes

Term two

- Language Development
- Academic Writing
- Lecture Skills

Term three

- Exam Preparation
- Presentation Skills

Term four

- Advanced Exam Preparation
- Academic Writing
- Communicative Presentations

Specialist subjects

(availability may vary depending on intake)

- Grammar
- Vocabulary
- Media
- German Studies
- Business Studies
- Technical German

France academic outline

Term one

- Language Development
- French for Academic Purposes

Term two

- Language Development
- Academic Writing
- Lecture Skills

Term three

- Exam Preparation
- Presentation Skills

Term four

- Advanced Exam Preparation
- Academic Writing
- Communicative Presentations

Specialist subjects

(availability may vary depending on intake)

- Grammar
- Vocabulary
- Media
- French Studies
- Business Studies
- Technical French

*Excluding the Humanities, nearly all MBAs and a growing number of Master's students in France need to be bilingual English-French.

Pre-PHD Program

32 lessons
of 40 minutes per week
(21 hours, 20 minutes)

Students receive intensive classroom tuition over the course of their two terms. In addition, they are expected to carry out significant autonomous self-study in order to complete homework tasks and write their thesis proposal and literature review.

Program duration

UK: 2 terms, with start dates in September, January and April

Locations

EF Manchester

English requirement

- 2-term program: IELTS 5.5 (no component less than 5.0), TOEFL 550 PBT/213 CBT/81 IBT, EF SET 50 or the equivalent on the free EF UPIBT test.

UK academic outline

Term one

- PhD Proposal Development
- Advanced Language Skills
- Application workshop
- English for Academic Purposes

Term two

- IELTS
- Quantitative and Qualitative Research Methods
- Critical Reasoning



Language Preparation Program

Enroll in a flexible-length course that helps you obtain the language proficiency required for an EF University Preparation Abroad program.

Program overview

Regardless of your current language level, EF can help you meet or exceed the language requirements needed to enter the following EF University Preparation Abroad Programs: EF University Foundation Program, EF Accelerated College Degree Program, EF Pre-Master's & EF Pre-MBA Program, EF Pre-PhD Program and an undergraduate program at Hult International Business School.

Tailor your course length

Students who require the EF Language Preparation Program can begin any Monday of the year at any EF Language Preparation Campus and study for as long as they like. There are also special 2-, 3- or 4-term programs that include targeted academic studies designed in collaboration with our university partners.

Learn more, faster

Courses are taught at all levels, from beginner to proficient, and are designed to accelerate your language fluency quickly and effectively. Students wishing to study for 2, 3 or 4 terms on a long-term program can also choose to focus on specific academic or career-related subjects. Depending on program length, you may have the opportunity to participate in an internship or volunteer experience at a local company so you can develop industry-specific language skills, build a personal network and gain real-world experience.

Our innovative method

EF Language Preparation Programs use the EF Method, our own complete package of learning materials specifically created for each level and phase of learning. Your class-time abroad, led by inspired teachers, is combined with technologically enhanced lessons then reinforced with speaking practice in real-world situations. You'll make faster progress because you're absorbing the language in various ways, around the clock. We go beyond traditional language learning, incorporating essential life skills into our curriculum. Our course books integrate practical, relevant real-world tasks for students to apply valuable skills like effective communication, critical thinking, and resilience.

Academic collaborations

Our collaboration with expert linguists has resulted in the development of the EF Standard English Test (EF SET), a groundbreaking test that assesses language proficiency levels. Developed by world-class linguists and assessment experts, the EF SET evaluates your language level according to the internationally recognized standard, the Common European Framework of Reference.

Program details

Intensive Program
32 lessons of 40 minutes per week

General Program
26 lessons of 40 minutes per week

Program duration

For specialized programs, study for 2, 3, or 4 terms, with start dates in September, November, January, April, and June.

For regular courses, study from 2 weeks and longer, and start any Monday.

Sample locations

Oxford, Manchester, Dublin, New York, Boston, Seattle, Vancouver, Sydney, Paris, and Munich.

Language requirement

No minimum language level required.

Result

Students who successfully complete the EF Language Preparation Program and meet the language requirements can then apply to a University Preparation Abroad Program, which guarantees university placement.





"I will study International Business Management, which requires proficiency in both English and French. Studying in Paris was a dream come true and provided the essential preparation I needed. It was the best decision I could have made."

Ivana Vučetić from Switzerland, EF Paris



UK & Ireland

Discover world-class education



EF Dublin ●

EF Manchester ●

○ EF Cambridge

EF Oxford ●

EF Bristol ○

EF London ○

EF Brighton

EF Bournemouth ○

○ EF Eastbourne

● EF University Preparation Abroad Campus

○ EF International Language Campus



Learn about the United Kingdom's and Ireland's world-renowned school system.

Why study in the UK or Ireland?

The UK's education system is widely regarded as one of the best in the world – and you'll benefit from all it has to offer with the help of EF. Once you graduate from an EF University Preparation Abroad Program, you'll not only get to enjoy the world-leading facilities found at universities across the nation but also expert tuition and Britain's renowned student life.

Ireland has a long history of academic excellence and is home to some of the leading universities in the world including one of the oldest, Trinity College Dublin, founded in 1592. Many universities in Ireland rank impressively well at international level making it a popular choice for international students. The varied selection of higher education institutions combines with historic cities, beautiful countryside and Ireland's unique culture to make the country a highly attractive study destination.

Education in the UK and Ireland

Compulsory education in the UK begins at the age of five and finishes at the age of 16 when students take their General Certificate of Secondary Education (GCSEs) in up to 10 subjects. Afterward, students can take A Levels at a sixth form college. Students usually study three to four subjects, which are commonly related to their desired degree subject. A Level grades are a determining factor in university admittance.

Irish students first attend school at the age of 5 and stay in Primary School until 12. Between ages 12 and 18, students attend secondary school. At the end of their time at secondary school all Irish students complete state examinations across all their chosen subjects. Students who complete secondary education may proceed to university education, pursue certificate or diploma studies at one of the many junior colleges.

The bachelor's degree

Undergraduate students in the UK typically pursue a bachelor's degree that specializes in one subject for three years. Entrance requirements for students in the UK include English proficiency (with a minimum IELTS level 6.0) and an additional year of secondary school, known as an EF University Foundation Program, which is equivalent to Grade 13. To study in Ireland, university preparation is highly recommended.

Higher education in Ireland consists of universities, specialist colleges (offering courses in a single subject area), and institutes of technology. The latter cover a wide range of vocational programs, in subjects including hospitality, healthcare, pharmacy, media, textiles, marketing and more.

Master's, MBA and PhD degrees

A traditional Master's or MBA degree typically lasts one year and requires successful completion of both exams and a dissertation to graduate. Some specialized careers require the completion of a doctoral program or PhD, which includes four to five years of advanced study and research. For most of these programs, international students are required to have a recognized undergraduate degree and an English level of at least IELTS level 6.5. MBA programs normally require at least two years of work experience.

Partner institutions in the UK



Meet our successful alumni

EF has helped place international students in some of the UK's leading institutions. In 2023, 90% of students were accepted into one of the top 50 universities in the UK.

United Kingdom's top universities*

1) University of St Andrews	16) University of Strathclyde
2) University of Oxford	17) University of Bristol
3) University of Cambridge	18) University of Exeter
4) London School of Economics	19) University of York
5) Imperial College	20) University of Southampton
6) University of Bath	21) University of Sheffield
7) University of Durham	22) University of Surrey
8) University College London	23) King's College London
9) University of Warwick	24) University of Manchester
10) University of Loughborough	25) Aston University
11) University of Lancaster	26) Swansea University
12) University of Aberdeen	27) University of Leeds
13) University of Glasgow	28) Ulster University
14) University of Edinburgh	29) Cardiff University
15) University of the Arts London	30) University of Bolton

*The Guardian University Ranking 2024

Discover your
language level today by
taking the EF University
Preparation Abroad Test

ef.com/upibt



Karen Yoshida
from Japan

EF University Foundation Program
at EF Oxford. Enrolled at
Glasgow School of Art

“Meeting a wide range of people, all with different backgrounds was just amazing. I made such unforgettable memories working, studying and living alongside them.”

Elizaveta Fedosiuk
from Russia

EF University Foundation Program at EF Oxford.
Enrolled at the University of Exeter

“I received four offers, but decided to accept the one from Exeter University – they gave me the opportunity to get a year of work experience.”



Jeffrey Mui
from Hong Kong

EF University Foundation Program
at EF Oxford. Enrolled at the University
of Birmingham

“Academically, the all-English environment and classes with international students really upgraded my English level. The courses in the University Foundation Program, such as learning how to do research, helped to prepare me for university.”

Choose your ideal university in the UK

EF partners with universities across the UK, giving our students the chance to apply to some of the most prestigious higher education institutions in the country.

EF Partner Institutions in the UK

Universities in the UK	Undergraduate degree programs													Master's		
	Business/Management	Accountancy/ Finance	Economics	Information Technology	Engineering	Mathematics	Media Studies	Law/Social Science	Applied Sciences	Hospitality/Tourism	Humanities/Languages	Biomedical Science	Education	Art & Design/Music	Master's programs	MBA program
Anglia Ruskin University	*			*	*	*	*	*	*	*	*	*	*	*	*	*
University of Bedfordshire	*			*	*	*	*	*		*	*	*	*	*	*	*
University of Birmingham	*	*	*	*	*	*	*	*	*	*	*	*	*	*	*	*
Bournemouth University	*	*	*	*	*		*	*	*	*		*		*	*	*
UOA, Bournemouth													*			
University of Bradford	*	*	*	*	*		*	*	*		*	*			*	*
University of Brighton	*	*	*	*	*	*	*	*	*	*	*	*	*	*	*	*
Coventry University	*	*		*	*	*	*	*		*	*	*	*	*	*	*
University of Essex	*	*	*	*	*	*	*	*	*	*	*	*	*	*	*	*
University of Exeter	*	*	*	*	*	*	*	*	*	*	*	*			*	*
Goldsmiths, University of London	*		*				*	*	*	*	*		*		*	*
University of Greenwich	*	*	*	*	*	*	*	*	*	*	*	*	*	*	*	*
Hult International Business School, London	*													*	*	*
Keele University	*			*	*	*	*	*		*	*	*	*		*	*
Lancaster University	*	*	*	*	*	*	*	*	*		*	*	*	*	*	*
University of Leeds	*	*	*	*	*	*	*	*	*	*	*	*	*	*	*	*
University of Leicester	*	*	*	*		*	*	*	*		*	*	*	*	*	*
University of Liverpool	*	*	*		*	*	*	*	*		*	*	*		*	*
Liverpool Hope University	*						*		*	*					*	*
Nottingham Trent University	*	*	*	*	*	*	*	*	*	*	*	*	*	*	*	*
Oxford Brookes University	*	*	*	*	*	*	*	*	*	*	*	*	*	*	*	*
University of Portsmouth	*	*	*	*	*	*	*	*	*	*	*	*	*	*	*	*
Solent University, Southampton	*	*		*			*	*				*	*	*	*	*
Surrey University	*			*	*	*	*	*	*	*	*	*	*	*	*	*
University of Southampton	*	*	*	*	*	*		*	*		*	*	*	*	*	*
University of South Wales	*	*	*	*	*	*	*	*	*	*	*	*	*	*	*	*
University of Strathclyde	*	*	*	*	*	*	*	*	*	*	*	*	*	*	*	*
University of Sussex		*	*		*	*	*	*	*	*	*	*	*	*	*	*
University of West England	*	*					*	*	*	*	*	*	*	*	*	*
University of West London	*	*	*	*	*	*	*	*	*	*	*	*	*	*	*	*
University of Westminster	*	*	*	*	*	*	*	*	*	*	*	*	*	*	*	*
University of York	*	*	*	*	*	*		*	*	*	*	*	*	*	*	*
Sheffield Hallam University	*	*		*	*			*	*	*		*	*	*	*	*



Manchester

EF International Language Campus

Manchester is known for its vibrant cultural scene and rich industrial heritage. Immerse yourself in this modern metropolis, and explore renowned universities and historical landmarks, making it an exceptional educational hub.

Included in the program

- Welcome package and orientation meeting
- Weekly schedule of lessons (40-minute lessons)
- University placement guaranteed for successful EF graduates
- Visits to universities and prospective student exhibitions
- University preparation and counseling with an EF University Pathway Advisor
- Assistance with 3 university applications
- Exams: Cambridge and IELTS
- Twin room in an EF Homestay
- Breakfast and dinner Monday-Friday, all meals at weekends
- EF course diploma
- English post-program for up to 6 months in EF Campus Learning
- Termly course reports
- Academic Transcript
- EF SET Graduation Report (EF Standard English Test)

Additional features

- EF Homestay: Single room from \$55/week
- EF Residence: Single/Twin/Multi rooms in our residences offering various catering options to make your stay as comfortable as possible. Starting from \$255/week.
- Flight arrangements
- Transfer service \$60
- Comprehensive travel & medical insurance coverage



EF Manchester

- Stately Victorian school located in Fallowfield, a lively student area
- Modern classroom facilities with the latest learning technology
- Large, spacious garden with terrace area and outdoor seating
- 5-minute walk to local bars, shops and restaurants
- 30-minute walk from Manchester University
- Bus stops right outside the school



Academic programs

- EF University Foundation Program (p. 14)
- EF Pre-Master's & Pre-MBA Programs (p. 22)
- EF Pre-PhD Program (p. 25)
- EF Language Preparation Program (p. 26)

Program fee (\$)

Tuition, accommodation, and meals included. Prices starting from:
 3 terms - \$24 390 (\$720 per week)
 2 terms - \$18 090 (\$825 per week)
 Contact us to get your personalized offer.



Explore all our programs and prices

ef.com/university

Programs

	Start dates		2026							
	24 Sep	2025	16 Jan	21 Apr	16 Jun	15 Sep	5 Jan	13 Apr	15 Jun	14 Sep
Academic Year Abroad (2, 3, 4 terms)	•	•	•	•	•	•	•	•	•	•
Pre-Master's, Pre-MBA & Pre PhD Semester (2 terms)	•	•	•	•	•	•	•	•	•	•
University Foundation Year (3 terms)	•	•	•	•	•	•	•	•	•	•
Language Preparation Program	Weekly start dates									



↑ Study at our stately Victorian campus in Fallowfield

Oxford

EF International Language Campus

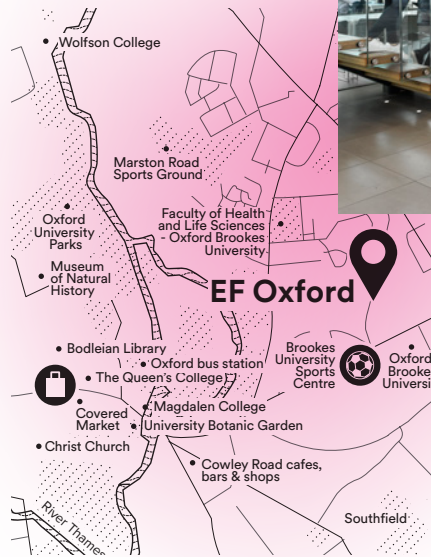
This university city defines the best of higher education, boasting graduates from Nobel Prize winners to esteemed novelists. Its beautiful architecture and old-world elegance have charmed students from around the world for over 800 years.

Included in the program

- Welcome package and orientation meeting
- Weekly schedule of lessons (40-minute lessons)
- University placement guaranteed for successful EF graduates
- Visits to universities and prospective student exhibitions
- University preparation and counseling with an EF University Pathway Advisor
- Assistance with 3 university applications
- Exams: Cambridge
- Twin room in an EF Homestay
- Breakfast and dinner Monday-Friday, all meals at weekends
- EF course diploma
- English post-program for up to 6 months in EF Campus Learning
- Termly course reports
- Academic Transcript
- EF SET Graduation Report (EF Standard English Test)

Additional features

- EF Homestay: Single room from \$55/week
- EF Campus Living: On-site: Triple/quad room from \$210/week. Twin room from \$210/week. Single room from \$270/week. Shared facilities. Half board.
- Flight arrangements
- Transfer service \$165
- Comprehensive travel & medical insurance coverage



EF Oxford

- Modern school features a glass-roofed cafeteria, fitness room, multimedia lecture hall and modern classrooms
- Campus is situated on extensive private grounds near the prestigious colleges of Oxford University
- Spacious student lounge equipped with flatscreen TV, games console, ping pong tables and a pool table
- Outdoor patio with lounge chairs and year-round BBQ café
- 5-minute walk to public transportation



Academic programs

- EF University Foundation Program (p. 14)
- EF Pre-Master's & Pre-MBA Programs (p. 22)
- EF Language Preparation Program (p. 26)

Program fee (\$)

Tuition, accommodation, and meals included. Prices starting from:
 3 terms - \$27 190 (\$800 per week)
 2 terms - \$20 090 (\$915 per week)
 Contact us to get your personalized offer.



Explore all our programs and prices

ef.com/university

Programs

	Start dates 2025		2026						
	16 Sep	6 Jan	21 Apr	16 Jun	15 Sep	5 Jan	13 Apr	15 Jun	14 Sep
Academic Year Abroad (2, 3, 4 terms)	•	•	•	•	•	•	•	•	•
Pre-Master's & Pre-MBA Semester (2 terms)	•	•	•	•	•	•	•	•	•
University Foundation Extended Year (4 terms)	•	•	•	•	•	•	•	•	•
University Foundation Year (3 terms)	•	•	•	•	•	•	•	•	•
University Foundation Semester (2 terms)	•	•	•	•	•	•	•	•	•
Language Preparation Program	Weekly start dates								



↑ Learn with international students
at our campus school on Pullens
Lane



Dublin

EF International Language Campus

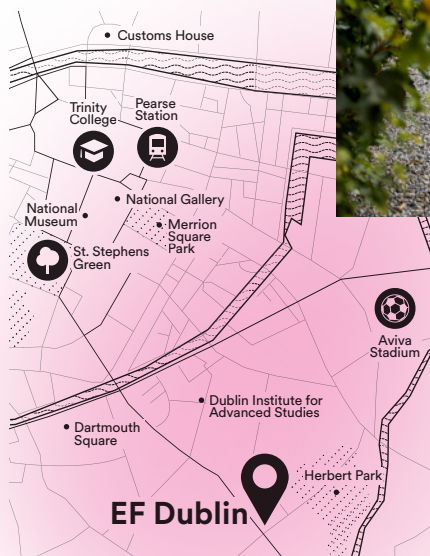
The capital city of Ireland, home to a handful of world-class universities, has been known for its educational excellence for centuries. Our campus has over 10 years of experience and it's bursting with international students.

Included in the program

- Welcome package and orientation meeting
- Weekly schedule of lessons (40-minute lessons)
- University placement guaranteed for successful EF graduates
- Visits to universities and prospective student exhibitions
- University preparation and counseling with an EF University Pathway Advisor
- Assistance with 3 university applications
- Exams: Cambridge and IELTS
- Twin room in an EF Homestay
- Breakfast and dinner Monday-Friday, all meals at weekends
- EF course diploma
- Termly course reports
- English post-program for up to 6 months in EF Campus Learning
- Academic Transcript
- EF SET Graduation Report (EF Standard English Test)

Additional features

- EF Homestay: Single room from \$55/week
- EF Residence: Single/Twin/Multi rooms in our residences offering various catering options to make your stay as comfortable as possible. Starting from \$185/week.
- Flight arrangements
- Transfer service \$95
- Comprehensive travel & medical insurance coverage



EF Dublin

- Brand new campus located in a beautiful and historic building
- A 20-minute bus ride to the shopping district, Temple Bar area, Trinity College and St. Patrick's Cathedral
- Stylish interiors include a spacious student lounge and cafeteria
- Outdoor patio with café tables and chairs
- Campus located in the popular Donnybrook area



Academic programs

- EF University Foundation Program (p. 14)
- EF Language Preparation Program (p. 26)

Program fee (\$)

Tuition, accommodation, and meals included. Prices starting from:
 3 terms - \$21 990 (\$650 per week)
 2 terms - \$16 490 (\$750 per week)
 Contact us to get your personalized offer.



Explore all our programs and prices

ef.com/university

Programs

	Start dates 2025		Start dates 2026						
	16 Sep	6 Jan	21 Apr	16 Jun	15 Sep	5 Jan	13 Apr	15 Jun	14 Sep
Academic Year Abroad (2, 3, 4 terms)	•	•	•		•	•	•		•
University Foundation Year (3 terms)	•	•				•	•		•
University Foundation Semester (2 terms)	•	•	•		•	•	•		•
Language Preparation Program	Weekly start dates								



EF Dublin



Develop your English at
our school located in the
Donnybrook area



USA & Canada

Study in famous
and prestigious destinations



EF Vancouver Island ○ ● EF Vancouver
● EF Seattle

EF Toronto ○

● EF Boston

● EF New York

EF Santa Barbara ○
EF Los Angeles ○

EF San Diego ○

EF Miami Beach ○

○ EF Honolulu

● EF University Preparation Abroad Campus

○ EF International Language Campus



USA's and Canada's school, college and university systems

Why study in the USA or Canada?

46 of the top 100 global universities are located between the United States and Canada. We'll help you apply to these institutions, and guarantee your placement at one of our esteemed partner universities.

Education in the USA and Canada

Schooling is mandatory for all children aged six to 16. Elementary school typically runs from Grade 1 to Grade 6 (ages 6 to 12), and Grades 7 to 8 (ages 13-14) are spent at a junior high or middle school. Grades 9-12 (ages 15 to 18) are attended at a high school.

Community colleges

Community colleges provide a two-year associate's degree program, often used as a springboard to a four-year bachelor's degree at university. Community colleges have fewer admission requirements than four-year institutions.

Liberal arts colleges

A liberal arts college places emphasis primarily on undergraduate study and can be private or public. Some also offer graduate programs in business administration, law, nursing and medicine.

Public universities

Commonly referred to as state universities, public universities are founded and operated by state government entities, receiving most of their funding from the state and/or federal government. Generally, they have statewide admission requirements and cost less than private universities.

Private universities

Private universities receive no governmental financial support. They are funded through faculty research grants, tuition fees and alumni donations. Students often choose private universities due to small class sizes, technological resources and research facilities.

Partner institutions in the USA & Canada



Meet our successful alumni

We've helped place students in some of North America's most respected institutions of higher education, including Harvard, Cornell and New York University.

North America's top universities*

1) Stanford University	16) Carnegie Mellon University
2) Massachusetts Institute of Technology	17) University of Washington
3) Harvard University	18) Duke University
4) Princeton University	19) New York University
5) California Institute of Technology	20) Northwestern University
6) University of California, Berkeley	21) University of California, San Diego
7) Yale University	22) Georgia Institute of Technology
8) The University of Chicago	23) University of British Columbia
9) Johns Hopkins University	24) University of Illinois at Urbana-Champaign
10) University of Pennsylvania	25) McGill University
11) Columbia University	26) University of Texas, Austin
12) University of California, Los Angeles	27) University of California, Davis
13) Cornell University	28) University of Wisconsin-Madison
14) University of Toronto	29) University of California, Santa Barbara
15) University of Michigan-Ann Arbor	30) University of Southern California

*Times Higher Education Rankings 2024

Check out our students' stories by searching

#EFmoment
on Instagram
and **#EFdaily**
on TikTok

Joy Aseh from Cameroon

EF University Foundation Program
at EF New York. Enrolled at Lake
Forest College

“The EF teachers are very experienced, helping students to speak fluently in English and offering courses related to our major at university. EF prepared me for standardized tests such as the TOEFL too. This experience has been very rewarding.”



Emma Portier from France

EF Pre-MBA Program at EF Boston.
Enrolled at Hult International
Business School

“My experience was unique and the environment at EF Boston was amazing. EF helped me apply for Hult and prepared me with essays, presentations and note-taking. I feel more confident now.”

Hoa Li Diep from Vietnam

EF Accelerated College Degree
Program at EF Seattle. Enrolled
at Green River College

“The most important skill I gained was being able to talk in front of the class and host presentations. I’ve learned English and discovered a lot about different cultures through my host family and friends. My EF experience has helped me a lot.”



Oscar Lam from Hong Kong

EF Accelerated College Degree Program,
EF Seattle

“I enrolled in the University Preparation Abroad Program at EF Seattle. I’ve made friends from different countries and adapted to the multicultural study life. My goal is to go to UCLA to study Animal Science and progress in the medical field after graduation.”

Choose your ideal university in the USA or Canada

With over 150 partner colleges and universities all across the USA & Canada, EF gives students the widest range of options when it comes to selecting a place to study.

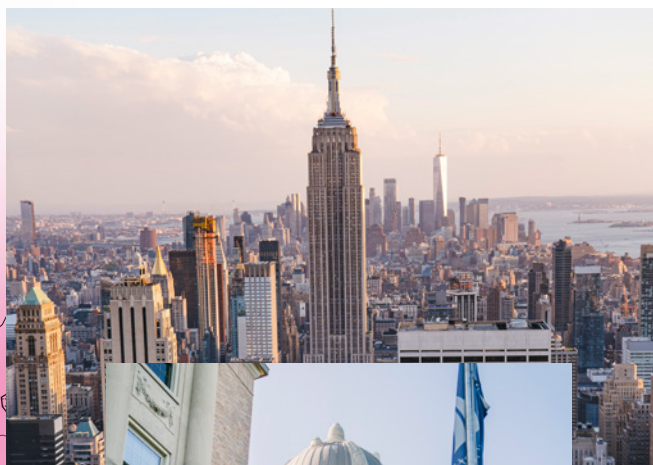
A selection of EF Partner Institutions in the USA & Canada

Universities in the USA and Canada (State/Province)	Undergraduate degree programs													Master's		
	Business/Management	Accountancy/ Finance	Economics	Information Technology	Engineering	Mathematics	Media Studies/Marketing	Law/Social Science	Applied Sciences	Hospitality/Tourism	Humanities/Languages	Health/Medicine	Education	Art & Design/Music	Master's programs	MBA program
Acadia University (NS)	*		*	*	*	*			*		*		*		*	
Algoma University (ON)	*	*	*		*			*			*				*	
Augsburg College (MN)	*	*	*	*		*		*			*	*	*		*	*
Berkeley College (NY)	*	*				*	*	*			*		*		*	*
Bryant University (RI)	*	*	*	*		*	*	*		*	*	*	*		*	*
Bunker Hill Community College (MA)	*			*	*	*		*	*	*	*	*	*			
California State University East Bay (CA)	*		*	*		*		*	*	*	*	*	*	*	*	*
College of Saint Elizabeth (NJ)	*					*	*	*			*		*			
College of the Desert (CA)	*	*	*	*		*	*	*		*	*	*	*	*	*	*
Colorado Mountain College (CO)	*		*	*				*	*		*	*	*			
De Anza College (CA)	*	*		*			*		*		*	*	*	*	*	*
El Camino College (CA)	*	*		*	*		*			*	*	*	*	*	*	*
Endicott College (MA)	*	*		*	*			*	*	*	*	*	*	*	*	*
Everett Community College (WA)		*	*	*		*	*	*		*	*	*	*	*	*	*
Fashion Inst. of Design & Merchandising (CA)	*			*			*						*		*	*
Fisher College (MA)	*	*		*			*	*		*		*			*	*
Foothill College (CA)		*	*	*		*		*					*			
Franklin Pierce University (NH)	*	*					*				*	*	*	*	*	*
Green River College (WA)	*	*		*	*	*	*	*		*	*	*	*	*	*	*
Iona College (NY)			*	*		*		*		*		*	*	*	*	*
Iowa State University (IA)	*	*	*	*	*	*	*	*		*	*	*	*	*	*	*
Johnson and Wales University (RI, CO, FL, NC)	*	*		*	*		*	*		*	*	*	*	*	*	*
LIM College (NY)	*					*		*					*		*	*
Loyola University New Orleans (LA)	*	*	*	*	*	*	*	*	*	*	*	*	*	*	*	*
Manhattanville College (NY)	*	*	*			*	*	*		*	*	*	*	*	*	*
Mercy College (NY)	*	*		*		*	*	*		*	*	*	*	*	*	*
Miami-Dade Community College (FL)	*	*	*	*	*	*	*	*	*	*	*	*	*	*	*	*
Midwestern State University (TX)	*	*	*	*	*	*	*	*	*	*	*	*	*	*	*	*
Milwaukee School of Engineering (WI)	*			*	*	*		*		*	*	*	*	*	*	*
Mira Costa College (CA)	*	*			*	*		*		*	*	*	*	*	*	*

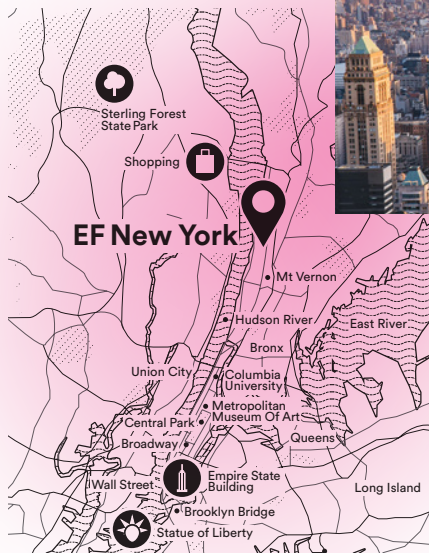
Universities in the USA and Canada (State/Province)	Undergraduate degree programs													Master's		
	Business/Management	Accountancy/Finance	Economics	Information Technology	Engineering	Mathematics	Media Studies/Marketing	Law/Social Science	Applied Sciences	Hospitality/Tourism	Humanities/Languages	Health/Medicine	Education	Art & Design/Music	Master's programs	MBA program
Montana State University (MT)	*	*	*		*	*		*	*		*	*	*	*	*	
Mount Saint Mary College (NY)	*	*		*	*	*	*	*			*	*	*	*	*	
New York Film Academy (NY)														*		
Oglethorpe University (GA)	*	*	*	*	*	*	*	*			*		*	*	*	
Pace University (NY)	*	*	*	*		*	*	*	*		*	*	*	*	*	
Peralta Colleges – Berkeley City College (CA)	*	*		*		*		*	*		*		*			
Peralta Colleges – College of Alameda (CA)	*	*	*	*		*		*			*	*	*	*	*	
Peralta Colleges – Laney College (CA)	*		*	*	*	*	*	*			*	*	*	*	*	
Peralta Colleges – Merritt College (CA)	*		*	*		*		*	*		*	*	*	*	*	
Rider University (NJ)	*	*	*	*		*	*	*			*	*	*	*	*	
San Francisco State University (CA)	*	*	*	*	*	*	*	*	*	*	*	*	*	*	*	
Santa Barbara City College (CA)	*	*	*	*	*	*	*	*	*		*	*	*	*	*	
Santa Monica College (CA)	*	*	*	*		*	*	*	*		*	*	*	*	*	
Seattle Central College (WA)				*					*		*					
Snow College (UT)	*	*	*	*	*	*	*	*	*		*	*	*	*	*	
South Puget Sound Community College (WA)	*	*	*	*				*	*		*		*			
Southwestern Oregon Community College (OR)	*	*	*	*		*	*	*	*		*	*	*	*	*	
St. Francis Xavier University (NS)	*	*	*	*	*	*	*	*	*		*	*	*	*	*	
St John's University (NY)	*	*	*	*		*	*	*			*	*	*	*	*	
St. Michael's College (VT)	*	*	*	*	*	*	*	*	*		*	*	*	*	*	
St Thomas Aquinas College (NY)	*	*	*	*	*	*	*	*	*		*	*	*	*	*	
Stetson University (FL)	*	*	*	*		*	*	*	*		*	*	*	*	*	
University of Findlay (OH)	*	*	*			*	*	*	*	*	*	*	*	*	*	
Trent University (ON)	*			*		*		*	*		*	*	*	*	*	
University of Dayton (OH)	*	*	*	*	*	*	*	*	*		*	*	*	*	*	
University of Hartford (CT)	*	*	*	*	*	*	*	*	*		*	*	*	*	*	
University of Indianapolis (IN)	*	*		*	*	*	*	*			*	*	*	*	*	
Wartburg College (IA)	*	*	*	*	*	*	*	*	*		*	*	*	*	*	
Widener University (PA)	*	*	*	*	*	*	*	*	*	*	*	*	*	*	*	
Willamette University (OR)	*	*	*	*	*	*	*	*			*	*	*	*	*	

New York

EF International Language Campus



America's largest metropolis is the world's trendsetter for all things entertainment, fashion and business. Be a part of the innovation that defines New York by studying on our 25-acre campus, located just an hour outside of Manhattan.



Included in the program

- Welcome package and orientation meeting
- Weekly schedule of lessons (40-minute lessons)
- University placement guaranteed for successful EF graduates
- Visits to universities and prospective student exhibitions
- University preparation and counseling with an EF University Pathway Advisor
- Assistance with 3 university applications
- Exams: TOEFL, ACT, GRE, GMAT
- English post-program for up to 6 months in EF Campus Learning
- Triple/quad room in EF Campus Living
- Breakfast and dinner Monday-Friday, brunch and dinner on weekends
- Language fluency and progress tests
- EF course diploma and transcript
- EF SET Graduation Report (EF Standard English Test)

EF New York

- Spacious 25-acre campus gives students an American campus experience
- 10-minute walk to local shops, cafés and restaurants on Broadway and main streets
- Excellent student facilities, including well-equipped classrooms, stylish lounges and large cafeteria
- School features an indoor swimming pool, fitness center, indoor basketball court, soccer field, sand volleyball court, and dance studio
- Excellent transportation connections to explore Manhattan by train



Additional features

- EF Campus Living: On-site: Twin room from \$75/week. Single room from \$200/week. Shared facilities. Half board.
- Flight arrangements
- Transfer service \$165
- Comprehensive travel & medical insurance coverage

Academic programs

- EF University Foundation Program (p. 14)
- EF Pre-Master's & Pre-MBA Programs (p. 22)
- EF Language Preparation Program (p. 26)

Program fee (\$)

Tuition, accommodation, and meals included. Prices starting from:
 3 terms - \$28 890 (\$850 per week)
 2 terms - \$21 190 (\$965 per week)
 Contact us to get your personalized offer.



Explore all our programs and prices

ef.com/university

Programs

Programs	Start dates 2024		2026						
	16 Sep	6 Jan	21 Apr	16 Jun	15 Sep	5 Jan	13 Apr	15 Jun	14 Sep
Academic Year Abroad (2, 3, 4 terms)	•	•	•	•	•	•	•	•	•
Pre-Master's & Pre-MBA Extended Year (5 terms)	•		•	•	•		•	•	•
Pre-Master's & Pre-MBA Extended Year (4 terms)	•			•	•			•	•
Pre-Master's & Pre-MBA Year (3 terms)	•	•	•		•	•			•
Pre-Master's & Pre-MBA Semester (2 terms)	•	•	•		•	•			•
University Foundation Extended Year (5 terms)	•		•	•	•		•	•	•
University Foundation Extended Year (4 terms)	•	•		•	•		•		•
University Foundation Year (3 terms)	•	•			•	•			•
University Foundation Semester (2 terms)	•	•	•		•	•			•
Language Preparation Program									

Weekly start dates



↑ Experience traditional student life by living and learning on our picture-perfect campus

Boston

EF International Language Campus

Boston is America's oldest major city and the birthplace of American independence. This harbor city attracts students from around the world to its renowned universities, making it the nation's academic capital.

Included in the program

- Welcome package and orientation meeting
- Weekly schedule of lessons (40-minute lessons)
- University placement guaranteed for successful EF graduates
- Visits to universities and prospective student exhibitions
- University preparation and counseling with an EF University Pathway Advisor
- Assistance with 3 university applications
- Exams: TOEFL, ACT, GRE, and GMAT
- English post-program for up to 6 months in EF Campus Learning
- Twin room in an EF Homestay
- Students in EF Homestay receive breakfast and dinner Monday-Friday, all meals on weekends
- Language fluency and progress tests
- EF course diploma and transcript
- EF SET Graduation Report (EF Standard English Test)

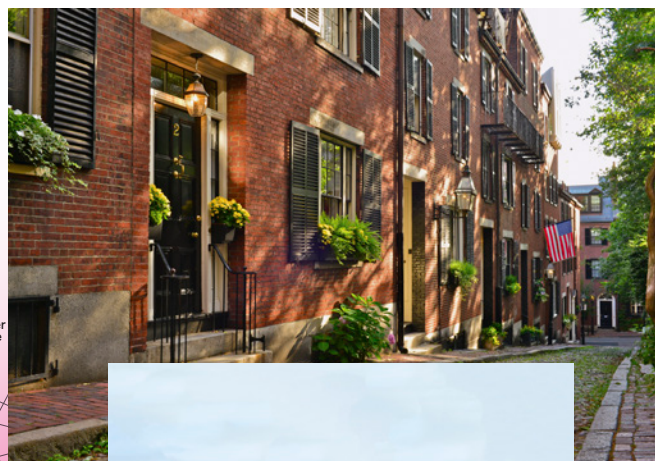
Additional features

- EF Homestay: Single room from \$55/week
- EF Campus Living: On-site: Triple/quad room from \$125/week. Twin room from \$250/week. Single room from \$290/week. Shared facilities. Half board.
- Flight arrangements
- Transfer service \$130
- Comprehensive travel & medical insurance coverage



EF Boston

- Historic 17-acre campus with stately brick buildings and beautiful grounds
- 10-minute walk to local cafés, restaurants and shops on Washington Street
- Campus amenities include a yoga room, basketball court and walking trail
- Park-like setting includes garden space and on-site recreation fields
- Close to public transportation to easy access downtown Boston
- Go skiing, visit New York and Washington, and explore picturesque New England



Academic programs

- EF University Foundation Program (p. 14)
- EF Pre-Master's & Pre-MBA Programs (p. 22)
- EF Language Preparation Program (p. 26)

Program fee (\$)

Tuition, accommodation, and meals included. Prices starting from:
 3 terms - \$25 390 (\$750 per week)
 2 terms - \$19 190 (\$875 per week)
 Contact us to get your personalized offer.



Explore all our programs and prices

ef.com/university

Programs

	Start dates		2026							
	24 Sep	2025	16 Jan	21 Apr	16 Jun	15 Sep	5 Jan	13 Apr	15 Jun	14 Sep
Academic Year Abroad (2, 3, 4 terms)	•	•	•	•	•	•	•	•	•	•
Pre-Master's & Pre-MBA Extended Year (5 terms)	•	•	•	•	•	•	•	•	•	•
Pre-Master's & Pre-MBA Extended Year (4 terms)	•	•	•	•	•	•	•	•	•	•
Pre-Master's & Pre-MBA Year (3 terms)	•	•	•	•	•	•	•	•	•	•
Pre-Master's & Pre-MBA Semester (2 terms)	•	•	•	•	•	•	•	•	•	•
University Foundation Extended Year (5 terms)	•	•	•	•	•	•	•	•	•	•
University Foundation Extended Year (4 terms)	•	•	•	•	•	•	•	•	•	•
University Foundation Year (3 terms)	•	•	•	•	•	•	•	•	•	•
University Foundation Semester (2 terms)	•	•	•	•	•	•	•	•	•	•
Language Preparation Program										

Weekly start dates



Call our leafy campus home
and gain the language skills to
launch your future



Seattle

EF International Language Campus

Our school on the campus of Evergreen State College blends the spectacular natural beauty of the Pacific Northwest with Seattle's cool urban style. Study here and discover the dynamic energy of one of America's favorite cities.

Included in the program

- Welcome package and orientation meeting
- Weekly schedule of lessons (40-minute lessons)
- University placement guaranteed for successful EF graduates
- Visits to universities
- University preparation and counseling with an EF University Pathway Advisor
- Assistance with 3 university applications
- Exams: TOEFL
- English post-program for up to 6 months in EF Campus Learning
- Twin room in an EF Homestay
- Breakfast and dinner Monday-Friday, all meals on weekends
- Language fluency and progress tests
- EF course diploma and transcript
- EF SET Graduation Report (EF Standard English Test)

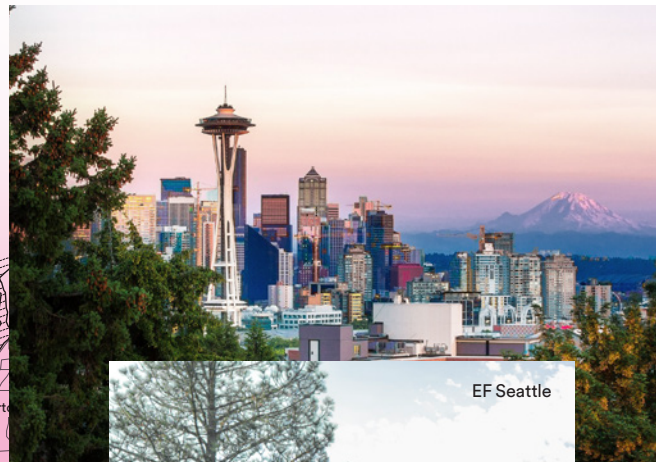
Additional features

- EF Homestay: Single room from \$55/week
- EF Campus Living: On-site: Twin room from \$185/week. Single room from \$295/week. Shared facilities. Half board Monday-Friday.
- Flight arrangements
- Transfer service \$155
- Comprehensive travel & medical insurance coverage



EF Seattle

- School features classrooms with the latest learning technology
- Located on Evergreen State College campus surrounded by mountains, forests and lakes
- Access to campus student community center and library
- Sports facilities include basketball courts, tennis courts, playing fields, weight room, rock climbing wall, fitness center
- Organic farm on campus



Academic programs

- EF Accelerated College Degree Program (p. 20)
- EF Language Preparation Program (p. 26)

Program fee (\$)

Tuition, accommodation, and meals included. Prices starting from:
 3 terms - \$24 090 (\$710 per week)
 2 terms - \$17 190 (\$780 per week)
 Contact us to get your personalized offer.



Explore all our programs and prices
ef.com/university

Programs

	Start dates 2025		2026						
	16 Sep	6 Jan	21 Apr	16 Jun	15 Sep	5 Jan	13 Apr	15 Jun	14 Sep
Academic Year Abroad (2, 3, 4 terms)	•	•	•	•	•	•	•	•	•
Accelerated College Degree Extended Year (5 terms)	•	•	•	•	•	•	•	•	•
Accelerated College Degree Extended Year (4 terms)	•	•	•	•	•	•	•	•	•
Accelerated College Degree Year (3 terms)	•	•	•	•	•	•	•	•	•
Accelerated College Degree Semester (2 terms)	•	•	•	•	•	•	•	•	•
Language Preparation Program	Weekly start dates								

Vancouver

EF International Language Campus

Picturesque Vancouver boasts a rich history of education and is home to top-notch universities as well as majestic mountains, forests and the ocean. Our modern campus is the best starting point to discover one of Canada's most scenic areas.

Included in the program

- Welcome package and orientation
- Weekly schedule of lessons (40-minute lessons)
- University placement guaranteed for successful EF graduates
- Visits to universities and prospective student exhibitions
- University preparation and counseling with an EF University Pathway Advisor
- Assistance with 3 university applications
- Exam Skills: TOEFL
- English post-program for up to 6 months in EF Campus Learning
- Twin room in an EF Homestay
- Breakfast and dinner Monday-Friday, all meals on weekends
- Language fluency and progress tests
- EF course diploma and transcript
- EF SET Graduation Report (EF Standard English Test)

Additional features

- EF Homestay: Single room from \$55/week
- EF Residence: Single/Twin/Multi rooms in our residences offering various catering options to make your stay as comfortable as possible. Starting from \$215/week.
- Flight arrangements
- Transfer service \$100
- Comprehensive travel & medical insurance coverage



EF Vancouver

- Newly remodeled interior offers a state-of-the-art learning environment
- Renovated building located on Cambie Street
- Student lounge features comfortable seating area and flatscreen TV
- Shops, coffee houses and restaurants located right outside the school
- Close to public transportation for easy access to Yaletown and Vancouver's famous Stanley Park



Academic programs

- EF University Foundation Program (p. 14)
- EF Language Preparation Program (p. 26)

Program fee (\$)

Tuition, accommodation, and meals included. Prices starting from:
 3 terms - \$22 290 (\$660 per week)
 2 terms - \$16 790 (\$765 per week)
 Contact us to get your personalized offer.



Explore all our programs and prices

ef.com/university

Programs

	Start dates		2026							
	24	2025								
	16 Sep	6 Jan	21 Apr	16 Jun	15 Sep	5 Jan	13 Apr	15 Jun	14 Sep	
Academic Year Abroad (2, 3, 4 terms)	•	•	•	•	•	•	•	•	•	
University Foundation Extended Year (5 terms)	•		•	•	•		•	•	•	
University Foundation Extended Year (4 terms)		•	•	•	•	•		•	•	
University Foundation Year (3 terms)	•	•	•		•	•	•		•	
University Foundation Semester (2 terms)	•	•	•		•	•	•		•	
Language Preparation Program	Weekly start dates									

Australia

An ideal learning environment
for international students



○ EF Perth

○ EF Brisbane

● EF Sydney

EF Auckland ○

● EF University Preparation Abroad Campus

○ EF International Language Campus



Your future in Australia

Choose from world-class universities

We've proudly partnered with some of the world's most prestigious institutions, including seven highly-esteemed universities and colleges in Australia. Our partnerships offer many pathways for you to achieve success, setting you up for a truly international future.

Follow a clear path to success

Some of our key partners offer visa packages to students who book with us. This provisionally secures your residency in Australia for the entirety of your EF program and subsequent university degree, providing you with a clear and reputable academic pathway before you've even left your home country.

Your continuation on this path is dependent upon successful completion of your EF program.

Transition to university

If you've successfully finished Year 11 of high school in your country, you'll be able to directly enroll in a foundation program that leads onto a bachelor's degree at an Australian university, once you've completed our EF University Preparation Abroad program. Not yet reached Year 11? We'll assist you to follow the Technical and Further Education (TAFE) route to university. You'll earn a diploma that later leads to a bachelor's degree in a subject of your choosing.

So no matter what your level or academic interests, we'll support you to continue your education after studying with us.

* Please note that universities have specific academic requirements for enrollment.

Learn about Australia's esteemed school system and your different pathways to success with EF.

Why study in Australia?

Australia provides students with the perfect base to earn a globally recognized degree. Choose from campus- or city-based universities found across the country and enjoy traditional Aussie student life – firstly with EF and then at the university of your choice.

Education in Australia

Education in Australia is compulsory for eleven years, but university-bound students study for thirteen. The curriculum is nationalized across Australia with students learning core subjects such as English, Mathematics, Science, Social Studies and Physical Education. At the end of Year 12, students sit their Higher School Certificate examinations.

Bachelor's degrees

Upon completion of their Year 12 Certificate, students in Australia usually undertake a bachelor's program for three to six years. In addition to their Year 12 certificate equivalence, international students are required to demonstrate English fluency, which can be provided by an internationally recognized test result, such as an IELTS of 6.0 or higher. Successful completion of the EF University Foundation Program can waive the language requirement for entry to our partner universities, as well as prepare students for the academic demands of university.

Postgraduate degrees

Postgraduate programs are offered in many disciplines in Australia. Master's degrees require a minimum three-year full-time bachelor's degree and demonstrated fluency in English, such as an IELTS result of 6.5 or higher. The EF Pre-Master's and Pre-MBA Program prepares students for the academic rigor of Master's degrees and can waive the language requirement with our university partners upon successful completion of the course.

Partner institutions in Australia



Choose your ideal university in Australia

Successful completion of an EF University Preparation Abroad Program at EF Sydney provides students with a direct pathway to one of our partner institutions in Australia.

Australia's top universities*

1) University of Melbourne	11) RMIT University
2) University of New South Wales	12) University of Wollongong
3) University of Sydney	13) University of Newcastle
4) Australian National University	14) Curtin University
5) Monash University	15) Queensland University of Technology
6) University of Queensland	16) Deakin University
7) University of Western Australia	17) La Trobe University
8) University of Adelaide	18) Griffith University
9) University of Technology, Sydney	19) Swinburne University of Technology
10) Macquarie University	20) University of Tasmania

*QS Top University Rankings 2024



Direct-entry programs available at EF partner institutions in Australia and New Zealand

EF partner institutions in Australia and New Zealand	Foundation and undergraduate degree programs	IELTS test waiver	Visa Package	Business/Management	Accountancy/ Finance	Economics	Information Technology	Engineering	Mathematics	Media Studies	Law/Social Science	Hospitality/Tourism	Health/Medicine	Education	Art & Design/Music	Master's	Master's programs	MBA program
Bond University, Gold Coast	*			*	*	*				*	*		*		*		*	*
Curtin College in assoc. with Curtin University, Perth*	*			*	*	*	*	*					*		*			
Deakin College in assoc. with Deakin University, Melbourne*	*			*	*		*	*		*			*	*	*		*	*
Edith Cowan College in assoc. with Edith Cowan University, Perth*	*			*			*	*				*	*					
Eynesbury College with pathway to University of Adelaide*	*			*			*	*										
Griffith College in assoc. with Griffith University, Brisbane*	*			*			*	*				*	*	*	*			
International College of Management Sydney (ICMS)*	*			*								*					*	
La Trobe College in assoc. with La Trobe University, Melbourne/Sydney*	*			*	*	*	*	*		*			*					
SAIBT in assoc. with University of South Australia, Adelaide*	*			*			*	*		*			*		*			
Sydney Institute of Business and Technology (SIBT)*	*			*			*	*		*					*			
TAFE NSW, Sydney**	*	*	*	*			*	*		*		*		*	*			
UC College at the University of Canberra*	*			*			*		*	*			*		*			
University of Canterbury International College, Christchurch, NZ*	*			*			*	*										
University of Newcastle	*	*	*	*	*	*	*	*	*	*	*	*	*	*	*		*	*
University of Wollongong	*	*	*	*	*	*	*	*	*	*	*	*	*	*	*		*	*
UNSW Global in assoc. with UNSW, Sydney*	*	*	*	*	*	*	*	*	*	*	*	*	*	*	*		*	*
Western Sydney University	*	*	*	*	*	*	*	*	*	*	*	*	*	*	*		*	*

* Accepts students after Year 11 equivalent
 ** Accepts students after Year 10 equivalent



Sydney

EF International Language Campus

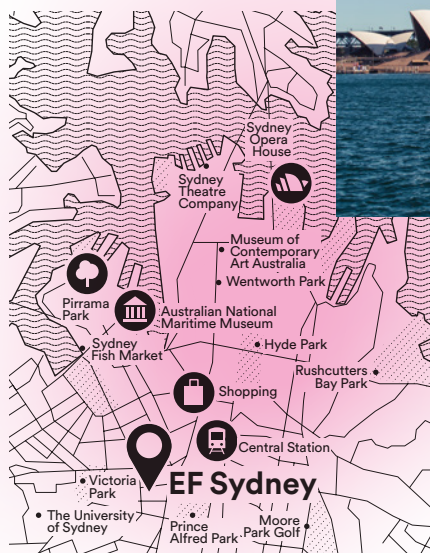
Australia's most vibrant city blends spectacular natural beauty with the fun-loving and adventurous spirit of its locals. The campus is situated in a lively student neighborhood, which provides an ideal learning environment for international students.

Included in the program

- Welcome package and orientation meeting
- Weekly schedule of lessons (40-minute lessons)
- University placement guaranteed for successful EF graduates
- Visits to universities and prospective student exhibitions
- University preparation and counseling with an EF University Pathway Advisor
- Assistance with 3 university applications
- Exams: Cambridge, TOEFL, IELTS and TOEIC
- English post-program for up to 6 months in EF Campus Learning
- Twin room in an EF Homestay
- Breakfast and dinner Monday-Friday, all meals on weekends
- Language fluency and progress tests
- EF course diploma and transcript
- EF SET Graduation Report (EF Standard English Test)

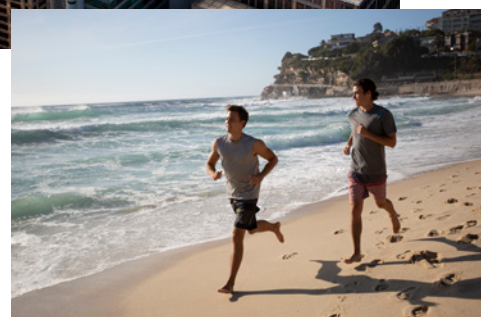
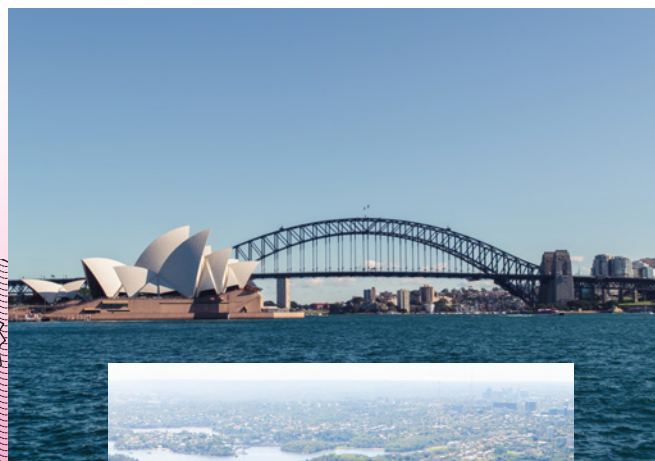
Additional features

- EF Homestay: Single room from \$55/week
- EF Residence: Single/Twin rooms in our residences offering various catering options to make your stay as comfortable as possible. Starting from \$215/week.
- Flight arrangements
- Transfer service \$125
- Comprehensive travel & medical insurance coverage



EF Sydney

- Bright classrooms with the latest teaching technology
- 10-minute walk from Sydney's central train station
- Spacious student lounge with pool table, foosball table and video games
- 1-minute walk from boutiques and restaurants
- Organized excursions to the Blue Mountains, Canberra and more
- Free Job Club supporting students in their job search



Academic programs

- EF University Foundation Program (p. 14)
- EF Pre-Master's & Pre-MBA Programs (p. 22)
- EF Language Preparation Program (p. 26)

Program fee (\$)

Tuition, accommodation, and meals included. Prices starting from:
 3 terms - \$22 290 (\$660 per week)
 2 terms - \$16 890 (\$770 per week)
 Contact us to get your personalized offer.



Explore all our programs and prices

ef.com/university

Programs

Programs	Start dates 2025		2026						
	16 Sep	6 Jan	21 Apr	16 Jun	15 Sep	5 Jan	13 Apr	15 Jun	14 Sep
Academic Year Abroad (2, 3, 4 terms)		•	•	•		•	•	•	
Pre-Master's & Pre-MBA Extended Year (5 terms)			•	•			•	•	
Pre-Master's & Pre-MBA Extended Year (4 terms)	•			•	•			•	•
Pre-Master's & Pre-MBA Year (3 terms)	•	•			•	•			•
Pre-Master's & Pre-MBA Semester (2 terms)		•	•			•	•		
University Foundation Extended Year (5 terms)			•	•			•	•	
University Foundation Extended Year (4 terms)	•				•			•	•
University Foundation Year (3 terms)	•	•			•	•			•
University Foundation Semester (2 terms)	•	•	•			•	•	•	•
Language Preparation Program Intensive									

Weekly start dates



EF Sydney



↑ EF Sydney is located in a lively student neighborhood

Germany & France

Find academic excellence



EF Berlin ○

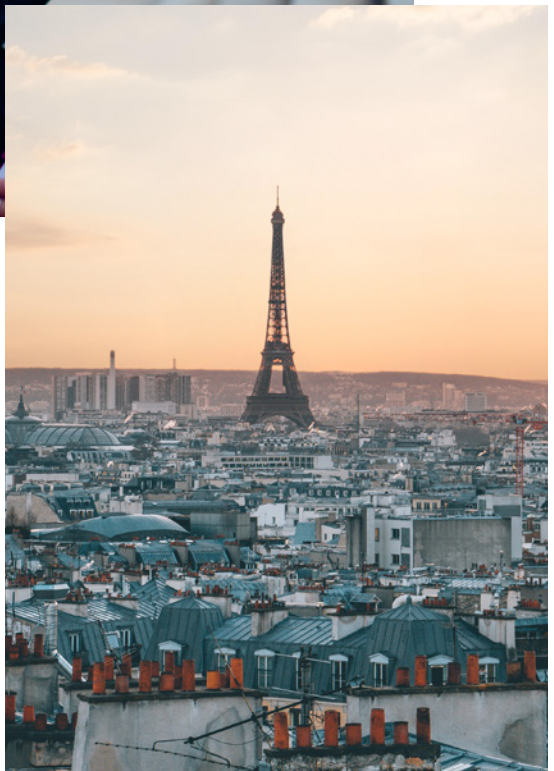
● EF Paris

● EF Munich

EF Nice ○

● EF University Preparation Abroad Campus

○ EF International Language Campus



School system of Germany

The German school system prepares students for entrance to higher education at the country's top universities.

Why study in Germany?

German universities combine centuries of academic heritage with state-of-the-art facilities to ensure students graduate with a prestigious degree. In Germany, public universities usually do not charge tuition fees, however, in rare cases, they may charge a low fee. As well as German universities, the language and academic skills gained with EF will allow you to attend university in Austria and Switzerland.

Education in Germany

From the age of six or seven (depending on the state), children attend an elementary school called Grundschule. They then progress to either a Hauptschule, which prepares students for a vocational education, or a Realschule, which has a broader range of emphases for intermediate pupils, or a Gymnasium, which prepares students for higher education with grades 12 or 13. There, students study up to 14 subjects (depending on the state) before taking the Abitur, which is the most common academic qualification required to enter German universities.

University

Germany's higher education system is renowned for its excellence, diversity, and innovation. Universities offer a variety of programs, blending theoretical knowledge with practical application, which makes graduates highly competitive in the global job market. A Bachelor's degree typically takes three years to complete and lays a strong foundation for future careers or advanced studies. It focuses on thorough understanding, critical thinking, and research skills within a vibrant international environment. Additionally, Germany provides outstanding internship opportunities in engineering, business, computer science, and healthcare, enabling students to gain valuable experience and establish industry connections.

Entrance requirements for international students include a German proficiency test (TELC C1 Hochschule for example) and – if the student's high school diploma is not considered equivalent to the Abitur – an additional year at a preparatory college in Germany, known as Studienkolleg, which is the equivalent to grade 13 at Gymnasium.

Master's or MBA degrees: Ages 21+

A Master's or MBA degree typically lasts two years and requires both exams and a thesis to graduate. For most of these programs, international students are required to have a recognized undergraduate degree and a German level of C1. MBA programs normally require at least one year of work experience.

Germany's top universities*

1) Technical University of Munich

2) LMU Munich

3) Heidelberg University

4) Charité - University of Medicine, Berlin

5) Humboldt University of Berlin

6) University of Tübingen

7) University of Bonn

8) Free University of Berlin

9) RWTH Aachen University

10) University of Freiburg

*Times Higher Education Rankings 2024



Munich

EF Internationaler Sprachcampus

Situated just over an hour from the Alps, Munich is the hub of all things Bavarian. From its trendy nightclubs to its relaxing public spaces like the famous Englischer Garten – which comes complete with a river surfing spot – there’s a lot to get excited about.

Included in the program

- Welcome package and orientation meeting
- Weekly schedule of lessons (40-minute lessons)
- University placement guaranteed for successful EF graduates
- Visits to universities and prospective student exhibitions
- University preparation and counseling with an EF University Pathway Advisor
- Assistance with 3 university applications
- Exams (TestDaF or Telc C1 Hochschule for example)
- Twin room in an EF Homestay
- Breakfast and dinner Monday-Friday, all meals at weekends
- German language fluency and progress tests
- EF course diploma and transcript

Additional features

- EF Homestay: Single room from \$55/week
- EF Residence: Single/Twin/Multi rooms in our residences offering various catering options to make your stay as comfortable as possible. Starting from \$145/week.
- Flight arrangements
- Transfer service \$110
- Comprehensive travel & medical insurance coverage



EF Munich

- Located in a beautiful area near Marienplatz, Munich’s main square
- 10-minute walk to shops on Maximilianstrasse and Theatinerstrasse
- Intimate and modern building fitted with bright classrooms and computer lab
- Explore the museums, theaters and entertainment of Munich on foot
- Ski in the Bavarian Alps, just one hour from Munich



Academic programs

- EF University Foundation Program (p. 14)
- EF Pre-Master's and EF Pre-MBA (p. 22)
- EF Language Preparation Program (p. 26)

Program fee (\$)

Tuition, accommodation, and meals included. Prices starting from:
 3 terms - \$24 490 (\$725 per week)
 2 terms - \$18 390 (\$840 per week)
 Contact us to get your personalized offer.



Explore all our programs and prices

ef.com/university

Programs

	Start dates 2025				2026				
	16 Sep	6 Jan	21 Apr	16 Jun	15 Sep	5 Jan	13 Apr	15 Jun	14 Sep
Academic Year Abroad (2, 3, 4 terms)	•	•	•	•	•	•	•	•	•
Pre-Master's & Pre-MBA Extended Year (4 terms)	•	•			•	•			•
Pre-Master's & Pre-MBA Year (3 terms)	•	•			•	•			•
Pre-Master's & Pre-MBA Semester (2 terms)	•	•			•	•			•
University Foundation Extended Year (4 terms)	•	•			•	•			•
University Foundation Year (3 terms)	•	•			•	•			•
University Foundation Semester (2 terms)	•	•			•	•			•
Language Preparation Program	Weekly start dates								

School system of France

France has a long history in academic excellence. Today, its school system provides students with a clear pathway to success.

Why study in France?

France is home to several world-renowned academic institutions that have helped shape the modern world. From prestigious art schools to business-focused institutions, French universities have been providing students with a first-class education for centuries. Today, students benefit from state-of-the-art facilities, small class sizes, low tuition fees and leading professors in universities across the country.

Education in France

French students first attend school at the age of 6 and stay in *l'école primaire* until the age of 10. Between 11 and 15, students attend *le collège*, which is equivalent to middle school. Students must pass a test called *le Brevet* to graduate from *le collège* and progress to *le lycée*. At *le lycée*, students spend three years studying for their *Baccalauréat général*, which is the qualification required to enter university.

Undergraduate

Students can apply to their chosen public and private universities once they have gained the necessary academic and language qualifications. Public universities accept all applicants who have the *Baccalauréat général* or international equivalent; private institutions, however, have a much stricter application process, including an entrance exam. Tuition fees also vary depending on the type of university and course. It should also be noted that students from the European Union and France pay different fees in comparison to students from outside the European Union. Undergraduate degrees usually last for three years and focus on one subject. Students collect up to 60 ECTS (credits) per year and need 180 to graduate.

Postgraduate

A Master's degree in France lasts for two years. After the first year of study, students must decide between working toward a teacher-led Master's degree or a Master's degree in research, with the latter option viewed as a PhD gateway. Depending on your course and institution, you'll have to complete a dissertation or research project to graduate with a Master's degree.

France's top universities*

1) Paris Sciences et Lettres -
PSL Research University Paris

2) Paris-Saclay University

3) Institut Polytechnique de Paris

4) Université de la Sorbonne

5) Université Paris Cité

6) École Normale Supérieure de Lyon

7) Université Grenoble Alpes

8) Université de Montpellier

9) Université d'Aix-Marseille

10) Université de Bordeaux

*Times Higher Education Rankings 2024

Partner institutions in Paris

 Intercultural school
Talents pour le monde



Paris

EF Campus International de Langue

Paris's world-famous sights, unrivaled cuisine and chic residents combine to create the perfect student destination. Add to the mix an innovative business scene and global outlook, and Paris has all you need to launch your international future.

Included in the program

- Welcome package and orientation meeting
- Weekly schedule of lessons (40-minute lessons)
- University placement guaranteed for successful EF graduates
- Visits to universities and prospective student exhibitions
- University preparation and counseling with an EF University Pathway Advisor
- Assistance with 3 university applications
- Exams: DELF and DALF
- Twin room in an EF Homestay
- Breakfast and dinner Monday-Friday, all meals at weekends
- French language fluency and progress tests
- EF course diploma and transcript

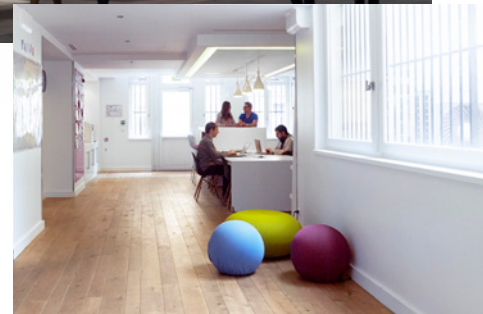
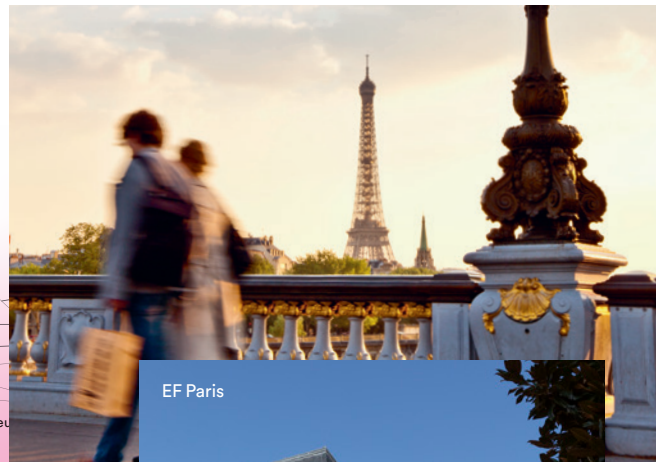
Additional features

- EF Homestay: Single room from \$55/week
- EF Residence: Single/Twin/Multi rooms in our residences offering various catering options to make your stay as comfortable as possible. Starting from \$320/week.
- Flight arrangements
- Transfer service \$205
- Comprehensive travel & medical insurance coverage



EF Paris

- Modern interior with the latest learning technology
- School located in the trendy 9th arrondissement
- 3-minute walk to shops, cafés, museums and theaters
- Close to the Metro system, making it easy to explore attractions including the Eiffel Tower, the Louvre, Sacré Coeur and Arc de Triomphe
- Cooking activities organized several times a week in a professional, modern kitchen



Academic programs

- EF University Foundation Program (p. 14)
- EF Pre-Master's and Pre-MBA Programs (p. 22)
- EF Language Preparation Program (p. 26)

Program fee (\$)

Tuition, accommodation, and meals included. Prices starting from:
 3 terms - \$24 390 (\$720 per week)
 2 terms - \$18 290 (\$835 per week)
 Contact us to get your personalized offer.



Explore all our programs and prices

ef.com/university

Programs

	Start dates		2026							
	24	2025								
	16	6	21	16	15	5	13	15	14	
	Sep	Jan	Apr	Jun	Sep	Jan	Apr	Jun	Sep	
Academic Year Abroad (2, 3, 4 terms)	•	•	•	•	•	•	•	•	•	
Pre-Master's & Pre-MBA Extended Year (4 terms)	•	•			•	•			•	
Pre-Master's & Pre-MBA Year (3 terms)	•	•			•	•			•	
Pre-Master's & Pre-MBA Semester (2 terms)	•	•			•	•			•	
University Foundation Extended Year (4 terms)	•	•			•	•			•	
University Foundation Year (3 terms)	•	•			•	•			•	
University Foundation Semester (2 terms)	•	•			•	•			•	
Language Preparation Program										

Weekly start dates

More EF programs for all ages

Discover a world of possibilities – from Language Abroad to Hult International Business School, our diverse range of programs caters to students of all ages, ensuring that you'll find an experience that perfectly matches your goals.



EF Language Travel Students 7-13 and 14-18

Learn a language, discover the world and make friends for life. Travel independently on a flexible-length course starting any Monday, or in an all-inclusive group accompanied by an EF Leader.

ef.com/travel

EF Academic Year Abroad Students and Adults

Combine language and academic studies for total cultural fluency during this long-term study abroad program. Prepare for an official language exam. Gain international work experience.

ef.com/year

EF Language Abroad Students and Adults

Learn a language faster abroad at an accredited EF International Language Campus. Choose from 10 languages in 50 destinations. Study from 2-52 weeks with results guaranteed. Courses start every Monday.

ef.com/campuses

EF Language Abroad Adults aged 50+

Start a new adventure with our immersive language course specifically designed for adults aged over 50. Learn English, French, Spanish, German, Korean, or Italian as you live the language through a blend of exciting cultural activities and a rewarding educational experience. You can study in destinations such as New York, London, Santa Barbara, Malta St. Julian's, Malaga, Nice, Berlin, Rome, and Seoul.

ef.com/50+





Hult International Business School

To learn business, you have to do business. Join a global student community on campuses across three continents at the first triple-accredited business school in the US. Offering degrees from undergraduate to doctorate, Hult is the school for those made to do.

hult.edu

EF High School Exchange Year

Ages 14 to 18

Spend a once-in-a-lifetime year as an exchange student in the USA. Live with a caring host family and attend a local high school with native English speakers. Don't just experience the culture; become a part of it.

ef.com/highschool

Hult EF Corporate Education

Hult EF creates the world's change-makers by transforming the way they communicate, perform and lead. We offer language & communication, coaching and leadership development programs to businesses and governments globally.

hultef.com

EF Academy International Boarding Schools

Ages 14 to 19

Study abroad and earn an internationally recognized degree at one of our modern, international boarding schools in New York, Pasadena, and Oxford. We've redesigned every aspect of the experience so that learning is highly individualized, totally hands-on, and in a global community of 60+ nationalities.

efacademy.org

Cultural Care Au Pair

Ages 18 to 26

Discover what the au pair life is all about! Live with an American host family while caring for their children. Develop new skills, make lasting friendships and explore the USA.

culturalcare.world



General information & how to book

Your adventure abroad is just around the corner. Choose your destination, program type and length to request your personalized offer in-person at your local EF office, over the phone or online. Receive your offer, book, and get ready to travel.

Included in the program fee

- Your chosen University Preparation Abroad program
- Accommodation in EF Homestay with a half board meal plan, or in selected EF Residences (see destination pages)
- Online pre- and post-course for all English programs
- Weekly activity program

EF Course Materials

EF Course Materials are needed to follow the EF course curriculum and the prices for these will be shown on your detailed offer.

Program start dates

Programs start in September, January, April and June. Find all the details at ef.com/bookmyprogram

Traveling to your EF campus

EF can organize both flights and transfers. Simply contact your nearest EF office for an offer.

Payment schedule

- Enrollment fee (\$350) and Cancellation Protection are due at the time of booking
- 14 days after booking, the equivalent of \$2000 is due
- 45 days after booking, another 15% of the program fee is due
- The remaining balance is due 60 days prior to the program start date

Travel insurance

As safety and security are our top priority, all students traveling with EF International Language Campuses are required to have travel insurance. Through our partner Erika Insurance Ltd., EF offers comprehensive travel insurance that is tailor-made and covers illnesses, accidents, repatriation, interruption, theft, delay and liability. Find all the details at erikainsurance.com

Cancellation Protection

EF Cancellation Protection is available upon enrollment and charged as a one-time, non-refundable fee of \$195. This covers cancellations before departure due to illness.

**Find full terms
and conditions
at ef.com/bookprogram**

All travel and language Programs are organized and sold by EF Education First Ltd, Selnaustrasse 30, 8001 Zürich, Switzerland (referred to as "EF"). EF Language Colleges Ltd. promotes the travel and language Programs organized and sold by EF Education First Ltd, Switzerland.



Booking your EF program is easy

Scan the QR code to choose your dream destination, program type and length and receive a price quote.



You can also email us at eflanguages@ef.com or visit your local EF office for a personalized consultation.



EF University Preparation Abroad
eflanguages@ef.com
ef.com



C
Ireland / Uni
Australia / Germ